

AUROCH TO KICK OFF EXTENSIONAL DRILLING AT SAINTS NICKEL PROJECT

Highlights

- Approvals granted (PoWs) for the upcoming diamond drilling programme at the Saints Nickel Project
- 3,000m drilling contract awarded to Topdrive Drillers Australia, a well-respected Australian drilling company with drilling experience in the Saints region
- Drilling targeted to grow the current Saints nickel resource (total JORC (2012) Mineral Resources of **1.05Mt @ 2.00% Ni, 0.20% Cu & 0.06% Co**) through drill testing of postulated extensions along strike and/or down-plunge of the known nickel sulphide mineralisation
- Drilling expected to begin within the next two weeks with preparations well advanced

Auroch Minerals Limited (ASX:AOU) (**Auroch** or **Company**) is pleased to announce that it has received all permits and access required to commence its maiden drilling programme at the recently-acquired Saints Nickel Project (**Saints**), located approximately 65 km northwest of Kalgoorlie and 7 km east of the Goldfields Highway (Figure 1).

The Department of Mines, Industry Regulation and Safety (**DMIRS**) has approved both Program of Work (PoW) applications relating to drilling programmes on M29/245 and M29/246 that comprise the Saints Project.

Auroch Chief Executive Officer Aidan Platel commented: *"The Company is wasting no time in initiating diamond drilling at our recently-acquired Saints Nickel Project located in one of Western Australia's most nickel-endowed greenstone belts. We have identified several high-quality targets comprising predominately untested electromagnetic (EM) plates that sit down-plunge and/or along strike from the known high-grade nickel sulphide mineralisation, which we believe have the potential to significantly add to the existing nickel sulphide resource. We are pleased to team up with Topdrive for our upcoming drilling programme to test these high-priority targets, and we look forward to commencing drilling in approximately 10 days' time."*

The focus of Auroch's initial drilling programme will be to **test the down-plunge extensions of the known high-grade nickel sulphide mineralisation at the St Patricks, St Andrews and Western Contact target areas**. All three areas contain moderate to strong EM conductors within close proximity to the known nickel sulphide mineralisation. The EM conductive "plates" were modelled from previous surface- and, more importantly, down-hole EM surveys, and remain predominately untested by drilling. The known nickel sulphide mineralisation in these three target areas comprise the existing JORC (2012) compliant Mineral Resources estimate of **1.05Mt @ 2.00% Ni, 0.20% Cu & 0.06% Co for approximately 21,000t of contained nickel metal¹**, and the Company believes the adjacent EM drill targets provide significant potential to add to this.

On the southern tenement (M29/246, see Figure 2), the Company will focus the drilling on EM conductors that are coincident with the base of the ultramafic units, which is where nickel sulphide mineralisation typically concentrates in komatiitic lava flows such as these.

¹ JORC (2012) Inferred Resources, above a 1.0% Ni cut-off grade. Refer to ASX Announcement - AUROCH TO ACQUIRE HIGH-GRADE WESTERN AUSTRALIAN NICKEL PROJECTS
<https://www.asx.com.au/asxpdf/20190528/pdf/445dz31g15d0kx.pdf>.

The Company will undertake down-hole EM surveys (**DHEM**) on all drill-holes completed in this initial drill programme. Due to the highly conductive nature of high-grade nickel sulphide mineralisation DHEM is considered the best tool for targeting continuations of the existing nickel sulphide mineralisation and hence can be used to define follow-up drill targets.

The 3,000m diamond drilling contract has been awarded to Topdrive Drillers Australia (**Topdrive**), a well-respected Australian drilling company with drilling experience in the Saints region. After a comprehensive tender process that included eight major drilling companies that are active in Western Australia, Auroch selected Topdrive based on competitive rates, availability of a suitable drill rig and previous experience diamond drilling in the Saints Region.

Auroch's geologist will be on-site later this week to supervise earthworks for drill pads and access tracks, most of which are existing tracks, with Topdrive expected to arrive on-site and initiate the first drill-hole shortly afterwards. The Company will update the market on an ongoing basis as results are received.

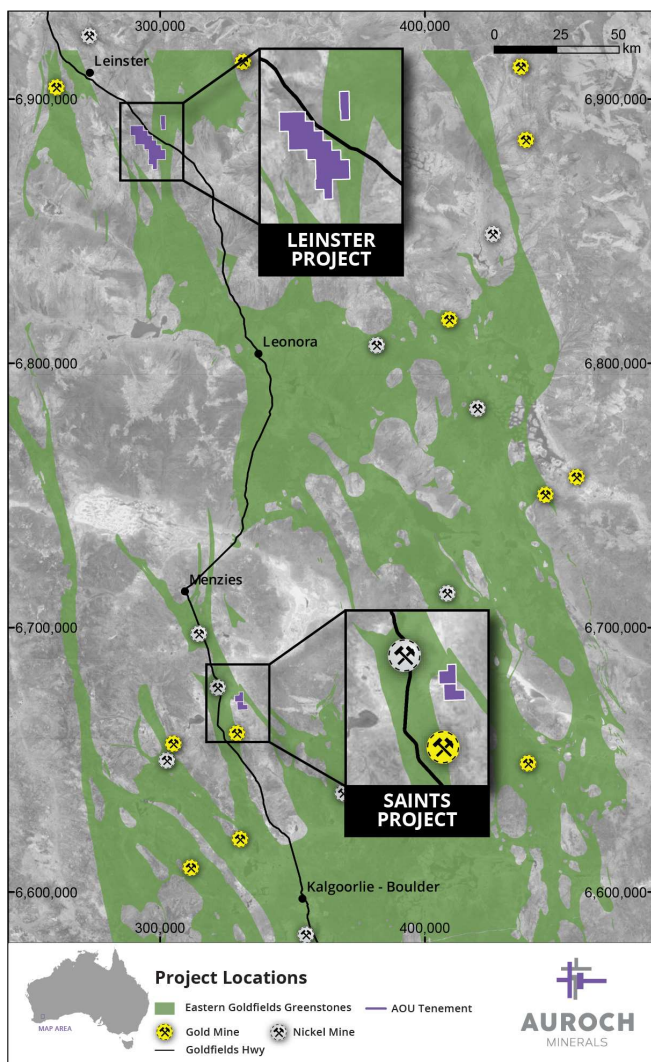


Figure 1 – Location of the Leinster and the Saints Nickel Projects, Western Australia

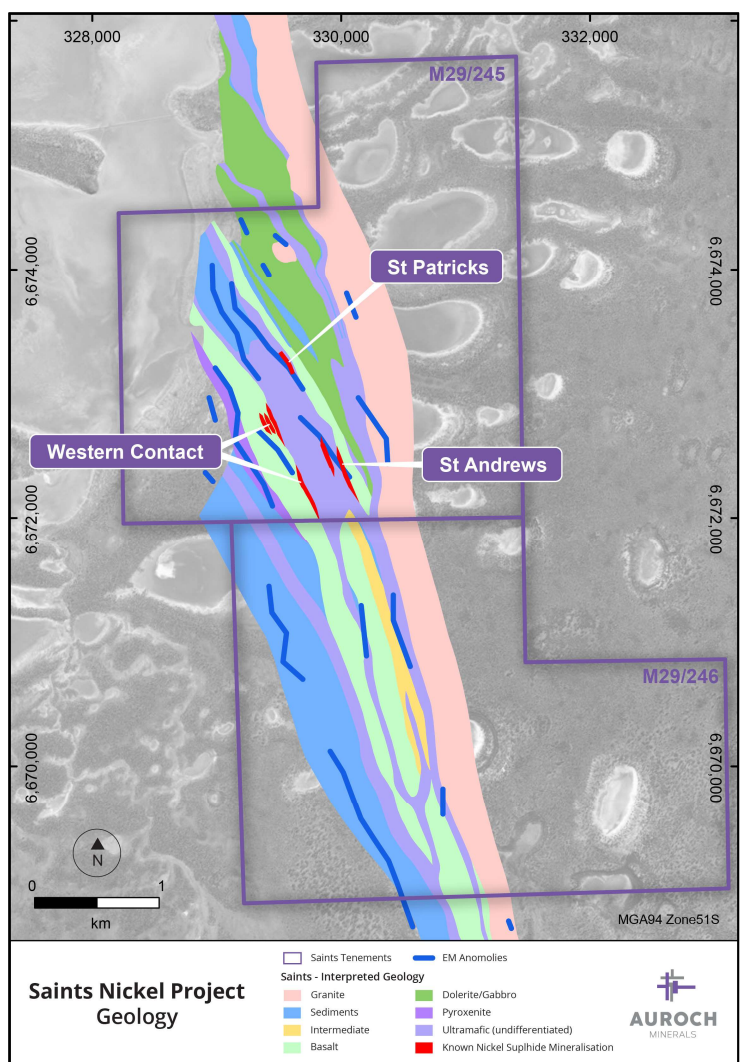


Figure 2 – Surface geology map of the Saints Nickel Project highlighting the numerous EM plates (dark blue) in relation to the known nickel sulphide mineralisation (dark red) and ultramafic units (purple).

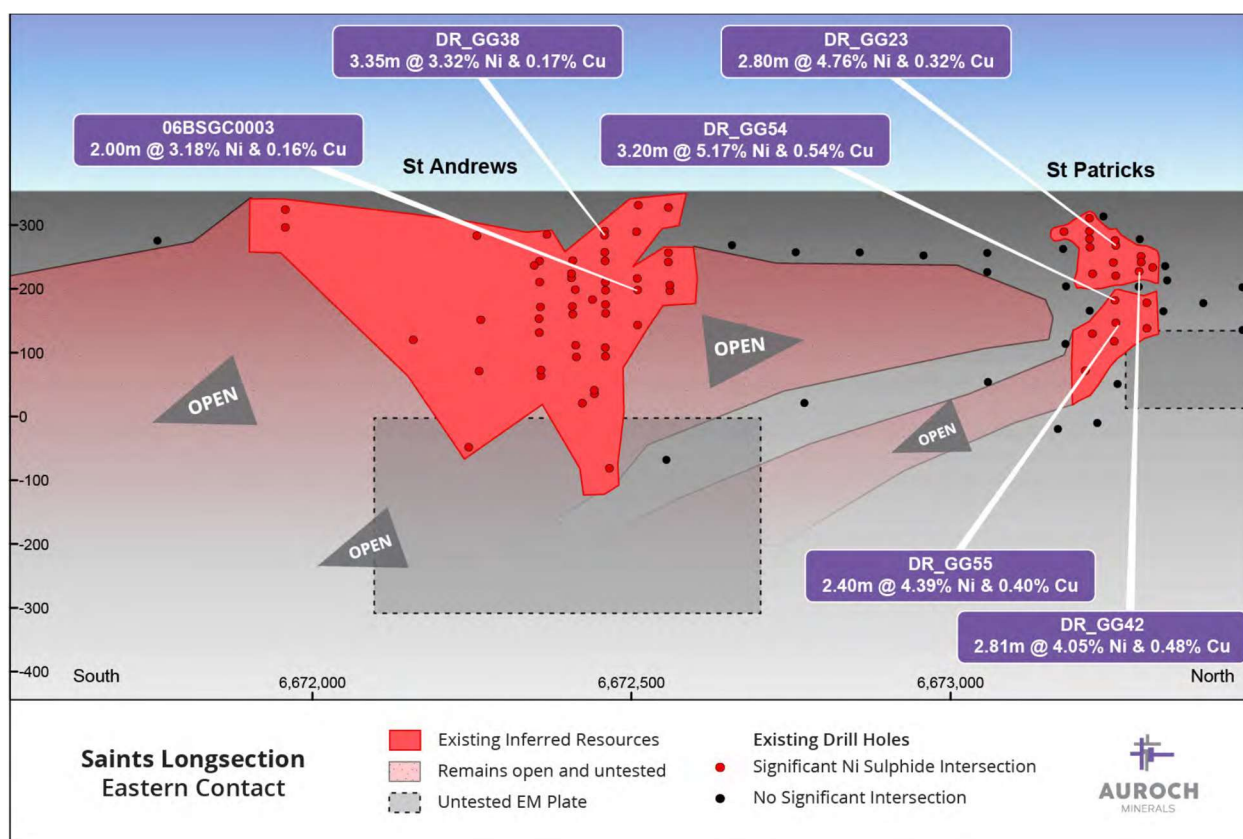


Figure 3 – Long-section of the Eastern Contact of the Saints Nickel Project displaying 1.0% nickel cut-off wireframes (dark red) (looking west). Moderate to strong EM plates that require further drill testing are shown in grey.

-END-

For further information contact:

Aidan Platel

Chief Executive Officer

E: aplatel@aurochminerals.com

Competent Persons Statement

The information in this report that relates to Exploration Results is based on information compiled by Mr Aidan Platel and represents an accurate representation of the available data. Mr Platel (Member of the Australian Institute of Mining and Metallurgy) is the Company's Chief Geological Officer and has sufficient experience that is relevant to the style of mineralisation and type of deposit under consideration and to the activity being undertaken to qualify as a Competent Person as defined in the 2012 Edition of the 'Australasian Code for Reporting of Exploration Results, Mineral Resources and Ore Reserves' ("JORC Code 2012"). Mr Platel consents to the disclosure of this information in this report in the form and context in which it appears.

Forward-Looking Statements

This document may include forward-looking statements. Forward-looking statements include, but are not limited to, statements concerning Auroch Minerals Limited's planned exploration program and other statements that are not historical facts. When used in this document, the words such as "could," "plan," "estimate," "expect," "intend," "may," "potential," "should," and similar expressions are forward-looking statements. Although Auroch Minerals Limited believes that its expectations reflected in these forward-looking statements are reasonable, such statements involve risks and uncertainties and no assurance can be given that actual results will be consistent with these forward-looking statements.