

# ASX ANNOUNCEMENT

## ABOUT CALIDUS RESOURCES

Calidus Resources Limited is an ASX listed gold company that owns 100% of the operating Warrawoona Gold Project and the nearby Nullagine Gold Project which are both located in the East Pilbara district of Western Australia.

## DIRECTORS AND MANAGEMENT

Mr Mark Connelly  
NON-EXECUTIVE CHAIRMAN

Mr David Reeves  
MANAGING DIRECTOR

Mr John Ciganek  
NON-EXECUTIVE DIRECTOR

Ms Kate George  
NON-EXECUTIVE DIRECTOR

Mr Richard McLeod  
CHIEF OPERATING OFFICER

Mr Richard Hill  
CHIEF FINANCIAL OFFICER


Ms Julia Beckett  
COMPANY SECRETARY

[calidus.com.au](http://calidus.com.au)

## ASX : CAI

 +61 8 9178 8950

 [info@calidus.com.au](mailto:info@calidus.com.au)

 Suite 12, 11 Ventnor Ave  
West Perth WA 6005  
AUSTRALIA

4 April 2024

## Resources Rising Stars Presentation

Calidus Resources Limited (ASX: CAI) advises that Managing Director, Mr David Reeves, will be presenting at the Resources Rising Stars Gather Round 2024 being held in Adelaide, South Australia, at 11:30am (ACDT) today.

Shareholders and investors can register to view the presentation on the free live stream via the following link:

<https://loom.ly/iRYRS70>

For the purpose of ASX Listing Rule 15.5, the Managing Director has authorised for this announcement to be released.

For further information please contact:

**Dave Reeves**  
Managing Director

 [info@calidus.com.au](mailto:info@calidus.com.au)

# THE PILBARA'S GOLD PRODUCTION HUB

## RESOURCE RISING STARS

April 2024

# Important Information

This presentation has been prepared by Calidus Resources Limited (the Company or Calidus) and is authorised by the Board of Calidus.

Not for release to US wire services or distribution in the United States.

## DISCLAIMER

This presentation is not an offer document and does not constitute investment advice. Neither this presentation nor the information contained in it constitutes an offer, invitation, solicitation or recommendation in relation to the purchase or sale of shares in any jurisdiction. This presentation does not take into account any person's particular investment objectives, financial resources or other relevant circumstances and the opinions and recommendations in this presentation are not intended to represent recommendations of particular investments to particular persons. All securities transactions involve risks, which include (among others) the risk of adverse or unanticipated market, financial or political developments. Before making an investment decision, prospective investors should consider the appropriateness of the information having regard to their own investment objectives, financial situation and needs and seek legal, accounting and taxation advice appropriate to their jurisdiction. This Presentation does not purport to contain all the information that a prospective investor may require in connection with any potential investment in the Company. It should be read in conjunction with, and full review made of the Company's disclosures and releases lodged with the Australian Securities Exchange (ASX) and available at [www.asx.com.au](http://www.asx.com.au).

To the fullest extent permitted by law, Calidus and each of its related bodies corporate, and each of their directors, officers, employees, contractors and professional advisors, do not make any representation or warranty, express or implied, as to the accuracy or completeness of any information, statements, opinions, estimates, forecasts or other representations contained in this presentation. No responsibility for any errors or omissions from this presentation arising out of negligence or otherwise is accepted.

This presentation includes forward looking statements (including in respect to estimated resources and reserves, planned production and operating costs profiles, planned capital requirements and planned strategies and corporate objectives). Forward looking statements are only predictions and are subject to risks, uncertainties and assumptions which are outside the control of Calidus. These risks, uncertainties and assumptions include commodity prices, currency fluctuations, economic and financial market conditions in various countries and regions, environmental risks and legislative, fiscal or regulatory developments, political risks, project delay or advancement, approvals and cost estimates. Actual values, results or events may be materially different to those expressed or implied in this presentation. Given these uncertainties, readers are cautioned not to place reliance on forward looking statements. Any forward looking statements in this presentation speak only at the date of issue of this presentation. Subject to any continuing obligations under applicable law and the ASX Listing Rules, Calidus does not undertake any obligation to update or revise any information or any of the forward looking statements in this presentation or any changes in events, conditions or circumstances on which any such forward looking statement is based. Forward looking All-In-Sustaining Cost estimates have been prepared on a real basis at a project level. Any All-In-Sustaining Cost, pre-tax free cashflow and IRR estimates in this Presentation are based on the economic assumptions detailed in the 29 February 2024 announcement.

## COMPLIANCE STATEMENT - WARRAWOONA GOLD PROJECT

The information in this presentation that relates to Exploration Results, Mineral Resources, Ore Reserves and Production Targets (and the forecast financial information derived from the production targets) at the Warrawoona Gold Project has been previously released to the ASX on 29 September 2020 and 21 September 2022, October 2023, February 19 2024 and February 22 2024. The Company confirms it is not aware of any new information that materially affects the announcement and that all material assumptions underpinning the Exploration Results, Mineral Resources, Mineral Ore Reserves and Production Targets (and the forecast financial information derived from the production targets) continue to apply and have not materially changed.

## COMPLIANCE STATEMENT - BLUE SPEC GOLD / ANTIMONY PROJECT

The information in this presentation that relates to Exploration Results and Mineral Resources and Ore Reserves at the Blue Spec Gold / Antimony Project has been previously released to the ASX on 2 October 2020 and 29 September 2022. Further exploration results reported in this presentation were announced on 28 November 2022, 18 January 2023 and 21 February 2023. The Company confirms it is not aware of any new information that materially affects the announcements and that all material assumptions underpinning the Mineral Resources and Ore Reserves continue to apply and have not materially changed.

## COMPLIANCE STATEMENT - PIRRA LITHIUM

The information in this presentation that relates to Exploration Results at the Spear Hill Project have been previously released to the ASX on 8 March 2022 and 11 May 2022, 9 November 2022. The Company confirms it is not aware of any new information that materially affects the announcements.

# Calidus Resources (ASX:CAI) Corporate Snapshot

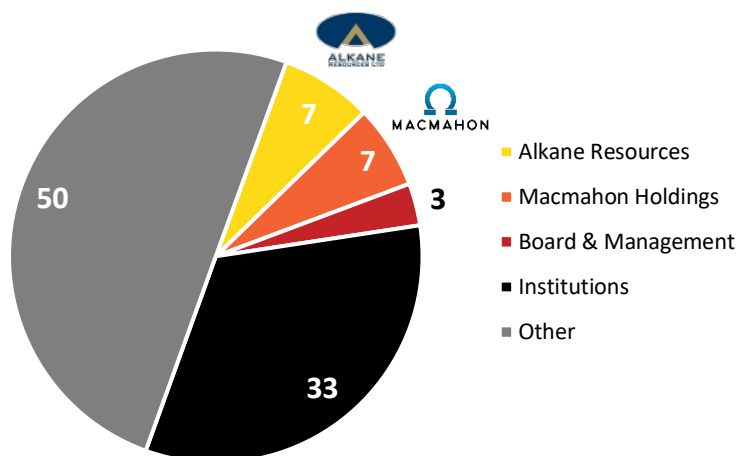
## ASX Code

Share Price (2 April 2024)	\$0.125
Shares on Issue	759.6m
<b>Market Capitalisation</b>	<b>\$94.95m</b>
Cash and cash equivalents (31-Mar-24)	\$12.2m
Debt (31-Mar-24)	\$61.0m
Enterprise Value	\$143.8m
Outstanding Hedging (31-Mar-23)	78,000ozs @ 2,370/oz

## Board

Mark Connelly	Non-Executive Chairman
David Reeves	Managing Director
John Ciganek	Non-Executive Director
Kate George	Non-Executive Director

## Top Shareholders (%) & Broker Coverage



cg/Canaccord  
Genuity

EUROZ HARTLEYS

BLUE OCEAN  
EQUITIES

## Management

Richard McLeod	Chief Operating Officer
Richard Hill	Chief Financial Officer
Jason Vos	General Manager – Projects and Technical
Corey Reynolds	General Manager - Operations
Julia Beckett	Company Secretary

# Core Fundamentals to Drive Value Creation

First gold poured May-22



- Calidus invested A\$120m developing the Warrawoona Gold Project (**WGP**)
- WGP infrastructure includes a 2.4Mtpa CIL process plant
- Operations centred around the Klondyke Open pit
- Currently producing from Klondyke Open Pit at 60,000 to 70,000 ozs pa

Increasing production profile

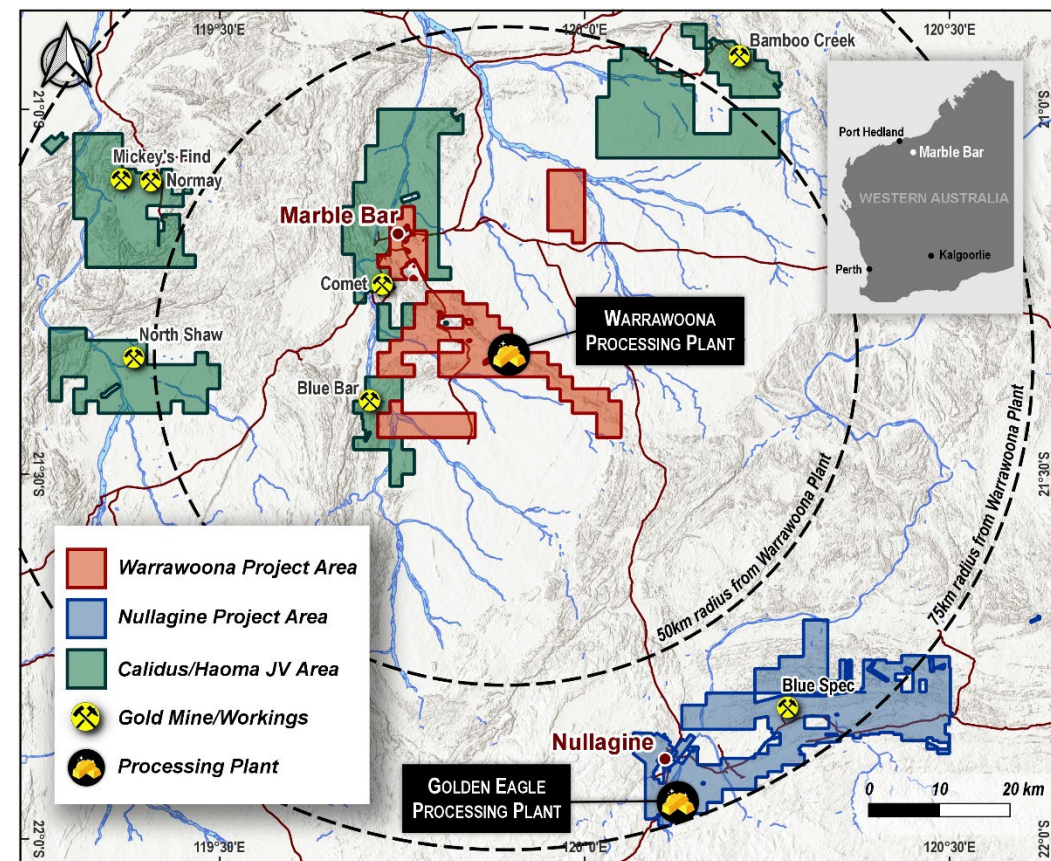


- Production is set to increase to 120,000ozpa over the next three years at AISC of ~A\$2,000/oz
- Increasing production from high grade satellite deposits

Regional consolidator



- Calidus controls the majority of known gold deposits in the East Pilbara
- Calidus has 4.2Mtpa of installed milling capacity
- Perfectly positioned to grow production, cashflow and mine life



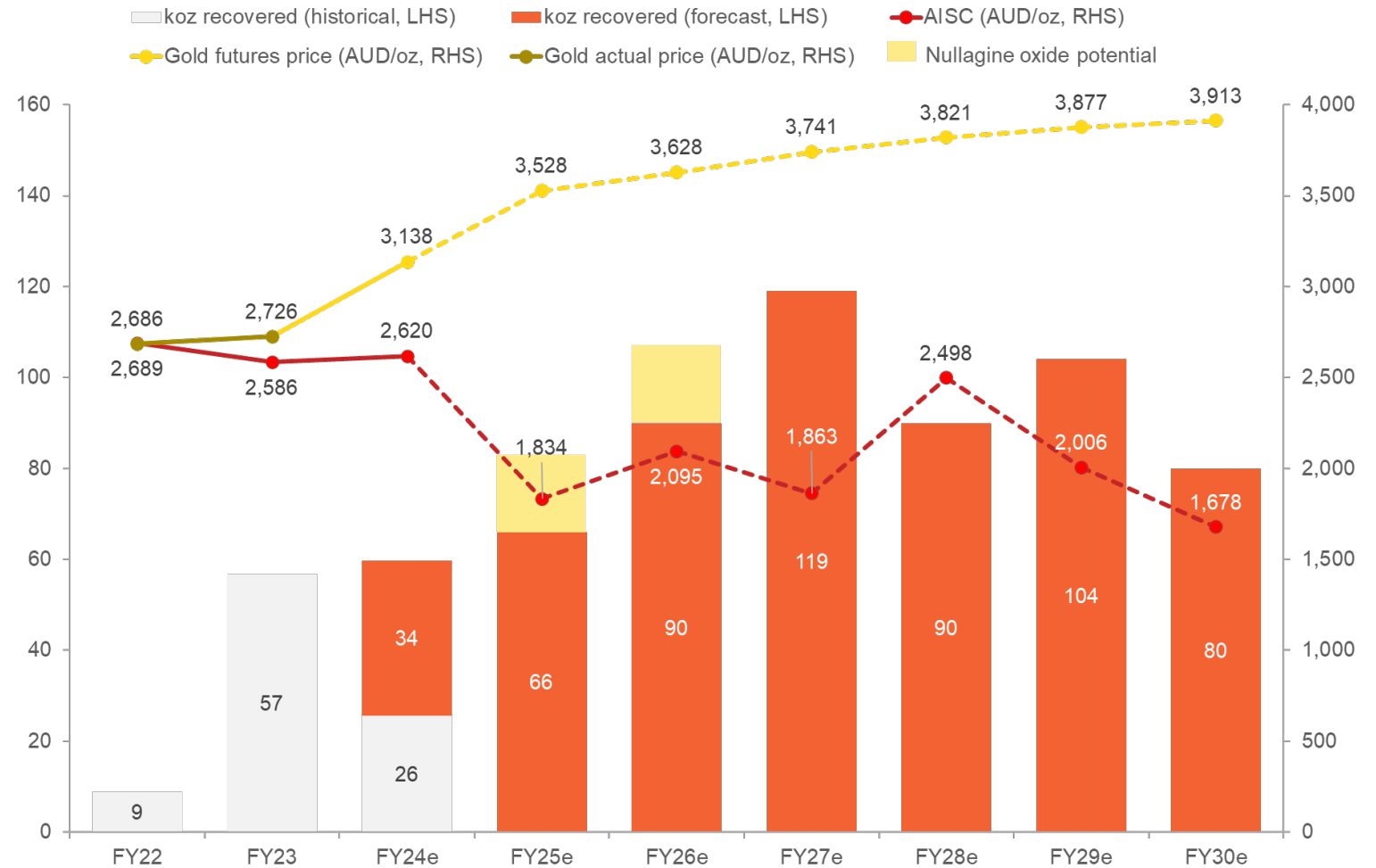
# Life of Mine Guidance

## 3-year strategy to deliver 120,000 ozpa with initial focus on high-grade deposits

- Production is projected to increase to 120koz p.a. by FY27 supported by Ore Reserves and Haoma JV deposits
- From FY25 onwards, Calidus' AISC is forecast to be to ~AUD 1,989/oz. Forecast AISC updated from 29th Feb announcement due to further mine planning.
- With improving cashflow generation, Calidus will also be well-positioned to unlock more potential from its other high-grade deposits

Note: (1) Converted at an assumed AUD/USD rate of 0.65; (2) Gold futures prices converted from USD/oz at forward AUD/USD rates - Source: FactSet

## Warrawoona Gold Production Profile and All-in-Sustaining-Cost (AISC)

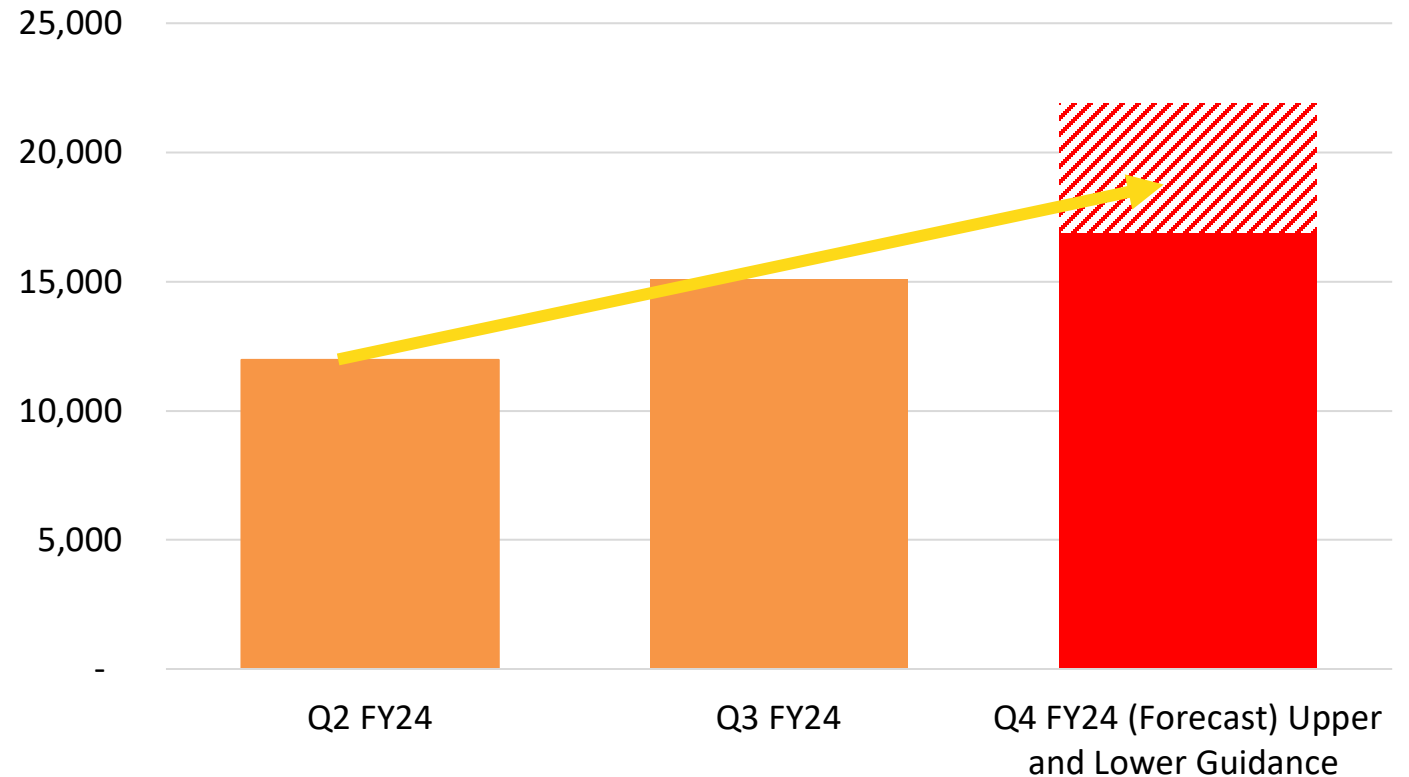


# March Quarter Production

## Production Increasing

- With cut-back now complete, grades from Klondyke have been improving
- Produced a record 5,845ozs in March
- Planning to mine ~6,500 ounces from Blue Bar in the coming quarter will boost June ounces produced significantly
- Reduced BCM movement of ~100,000 BCM/month from April onwards will help reduce AISC
- Re-affirm guidance of 32,000 to 37,000 ozs for H2 FY 24

Quarterly Ounces Produced



# Strengthened Financial Position

## Restructured Loan/Hedge and Equity Participation

Post a \$16.5M equity raise, the Company's lender, Macquarie, has agreed to the following:

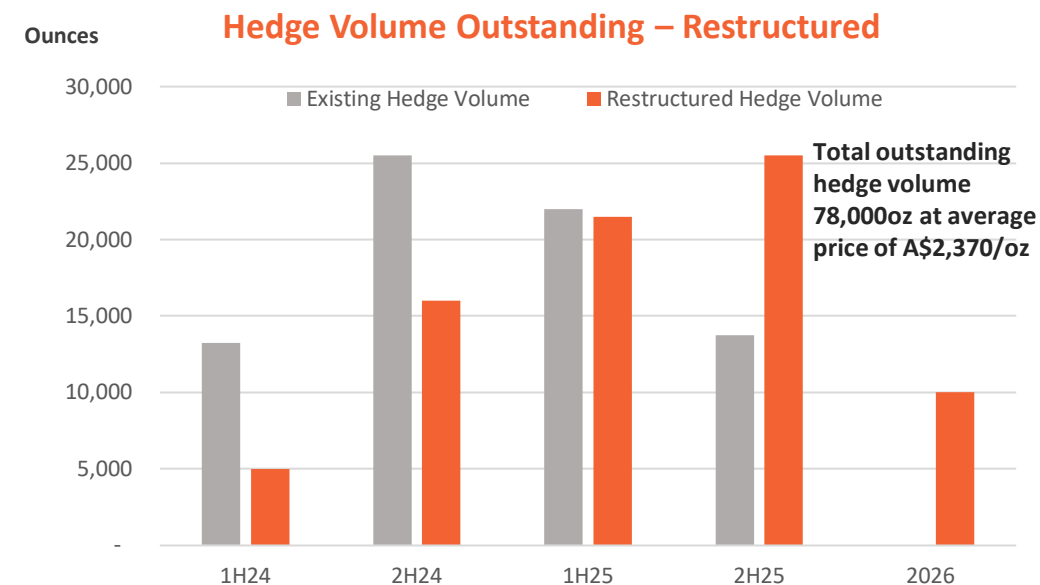
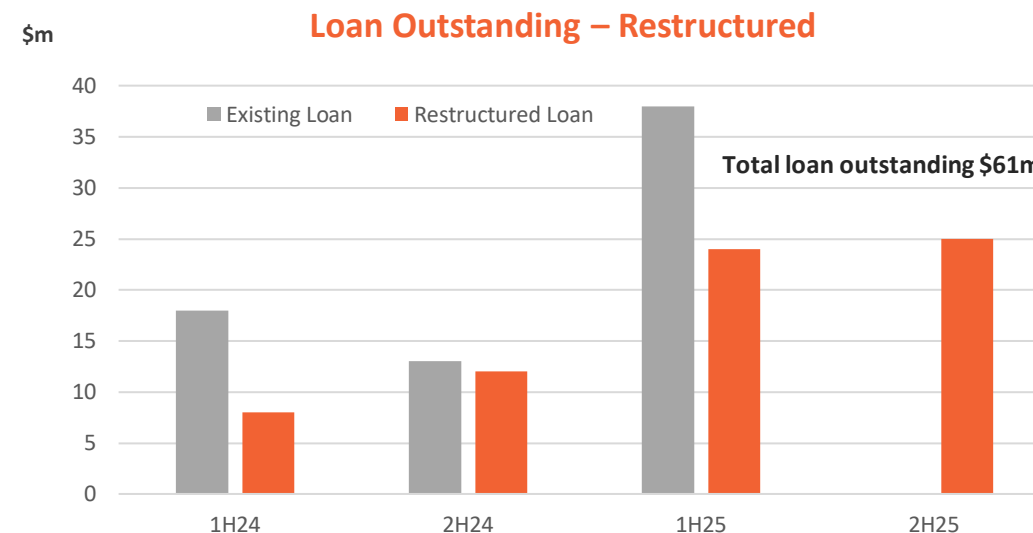
- **Equity Participation** - A\$2.5 million
- **Restructured Debt** - reduced debt amortisation by A\$11 million in CY24
- **Restructured Hedge Profile** – reduced hedge volume by 21,250oz for CY24 – currently valued at A\$20 million<sup>1</sup>

In combination, the restructured debt and hedge profile result in a ~\$31 million reduction in cash outflows in CY24.

Furthermore, it ensures robust cash generation for the next 12 months, providing a runway to develop the Bulletin deposit and explore loan restructuring options<sup>2</sup>.

1. Derived using spot gold price assumption of A\$3,300/oz

2. Calidus has been approached by a number of groups to refinance Macquarie and is in advanced discussions that include refinancing the debt and a portion of the hedge.





# Klondyke Open Pit

## Klondyke single open-pit underpins the next three years mine life at Warrawoona

- Reduction of Klondyke open-pit AISC as a result of decreasing strip-ratio and access to higher-grade ore zones
- Grade control drilling on eastern extent of the open-pit to bring more resources into reserves
- Low average strip ratio for remaining mine life of 3.4 results in Klondyke becoming a significant cash generator

### Klondyke Open-Pit Reserves (June 2023)

Cut-Off (g/t)	Proven			Probable			Total		
	Mt	Au (g/t)	koz	Mt	Au (g/t)	koz	Mt	Au (g/t)	koz
0.3	0.9	1.0	29	3.6	1.0	109	4.5	1.0	138

### Klondyke Open-Pit Resources (June 2023)

Cut-Off (g/t)	Measured			Indicated			Inferred			Total		
	Mt	Au (g/t)	KOz	Mt	Au (g/t)	KOz	Mt	Au (g/t)	KOz	Mt	Au (g/t)	KOz
0.3	1.1	1.02	36	13.0	0.97	404	17.0	0.73	400	31.1	0.84	840
0.5	0.98	1.10	34	11.0	1.07	377	10.6	0.94	320	22.5	1.01	731



Klondyke Open Pit March 2024

# Satellite Pits - Haoma Joint Venture (60% Calidus | 40% Haoma)

**Unlocking value of high-grade regional deposits on granted Mining Leases within trucking distance of Warrawoona that require minimal upfront capex and time to bring to production**

## 1 Blue Bar – 22km from Warrawoona

- Open-pit mining commenced and road train haulage underway. To be mined out by end of June 2024. Total Mineral Resource of 300kt @ 1.9 g/t Au

## 2 Bamboo Creek – 60km from Warrawoona

- Historic mining centre produced over 220koz @ 8.7g/t Au
- Bulletin PFS - 63,000oz at an AISC of A\$1,730/oz over 2-years mine life
- Field review and geological mapping in progress at other Bamboo Creek deposits to prioritise targets ahead of planned drilling

## 3 Mickey's Find – 60km from Warrawoona

- Potential for large, high-grade satellite deposit, resource estimation underway
  - 18m at 3.88g/t Au and 6.5g/t Ag from 39m (MFRC13)
  - 9m at 15.30g/t Au and 39.7g/t Ag from 140m to EOH
  - 20m at 4.47g/t Au and 6.2g/t Ag from 134m to EOH

## 4 Comet, North Pole, North Shaw and other regional prospects

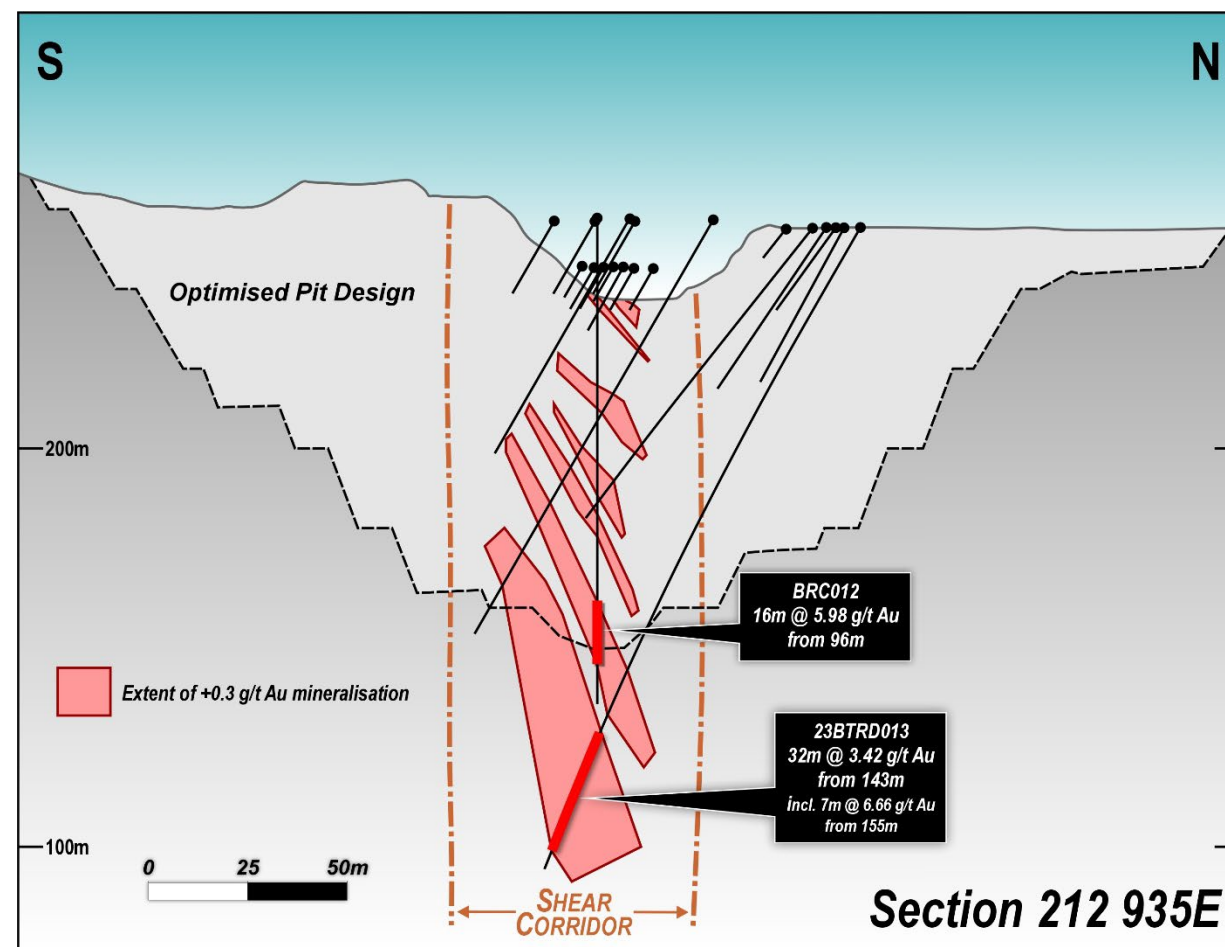


Blue Bar Project

# Bulletin Deposit (Haoma JV)

## Bulletin to drive a step-change in production and cash generation at Warrawoona

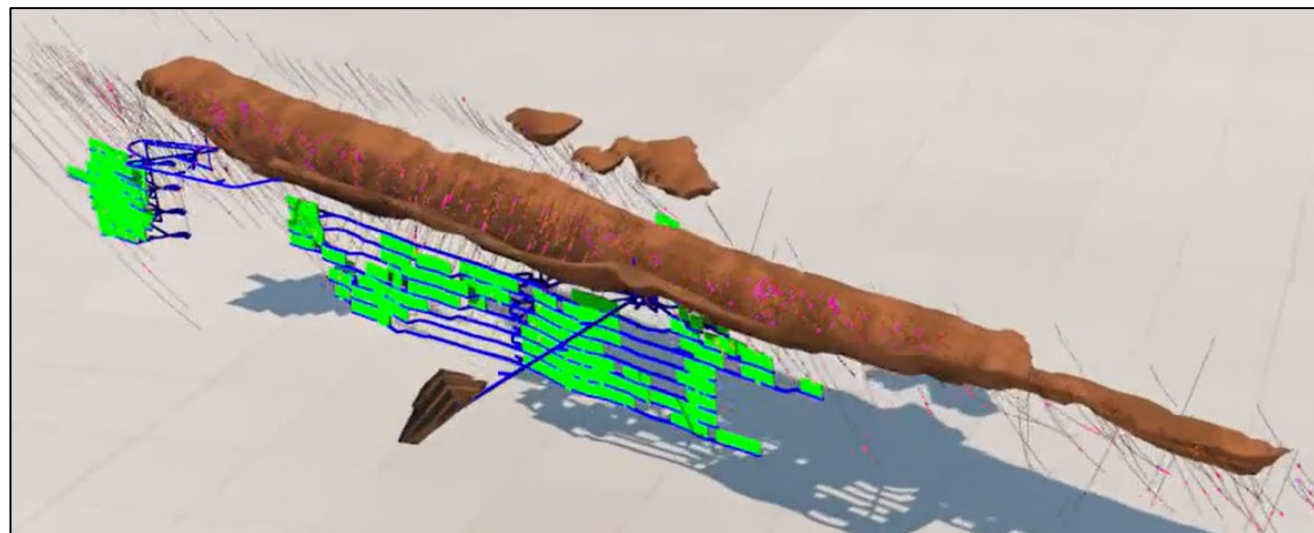
- Bulletin Mineral Resource of 784kt @ 4.0g/t Au for 100,000oz
- Pre-feasibility Study (PFS) on the Bulletin deposit highlights low upfront capex, high-margin gold production to commence beginning H1 CY2025
- PFS is based on a Maiden Probable Ore Reserve of 600kt @ 2.86g/t Au for 55koz and includes open-pit Inferred Resources 100kt @ 2.55g/t Au for 8koz
- Mine Life of 2 years; **AISC of A\$1,730/oz**; Pre-strip and capital cost of A\$17M
- Production from Bulletin will drive an increase in Warrawoona's production profile, supplementing ore from the Klondyke Open-Pit
- Mineralisation at Bulletin remains open at depth, highlighting possibilities for underground mining
- Bulletin is located on granted Mining Leases with all key approvals in-place to commence pre-strip development



Bulletin Cross Section

## Production from Klondyke Underground in FY26 targeting the higher-grade portion of the Klondyke orebody below the open-pit

- Simple long-hole open stope below the Klondyke open-pit with a portal to be developed in pit to reduce development costs
- Significant ounces delivered per vertical metre as a result of low-cost, large equipment and no backfill required
- Grade control drilling defined a higher-grade core that will support approximately 3-years of mine life at Warrawoona
- Klondyke Underground Reserves of 1.9Mt @ 2.1g/t Au for 120koz
- Klondyke Mineable Inventory of 3.4Mt @ 2.2g/t Au for 240koz
  - Average depth of 170m below pit
- Mineralisation remains open at depth and CAI will selectively test extensions once underground production has commenced



### Klondyke Underground Reserves (June 2023)

Cut-Off (g/t)	Proven			Probable			Total		
	Mt	Au (g/t)	Koz	Mt	Au (g/t)	koz	Mt	Au (g/t)	koz
1.2				1.9	2.1	120	1.9	2.1	120

### Klondyke Underground Resources (June 2023)

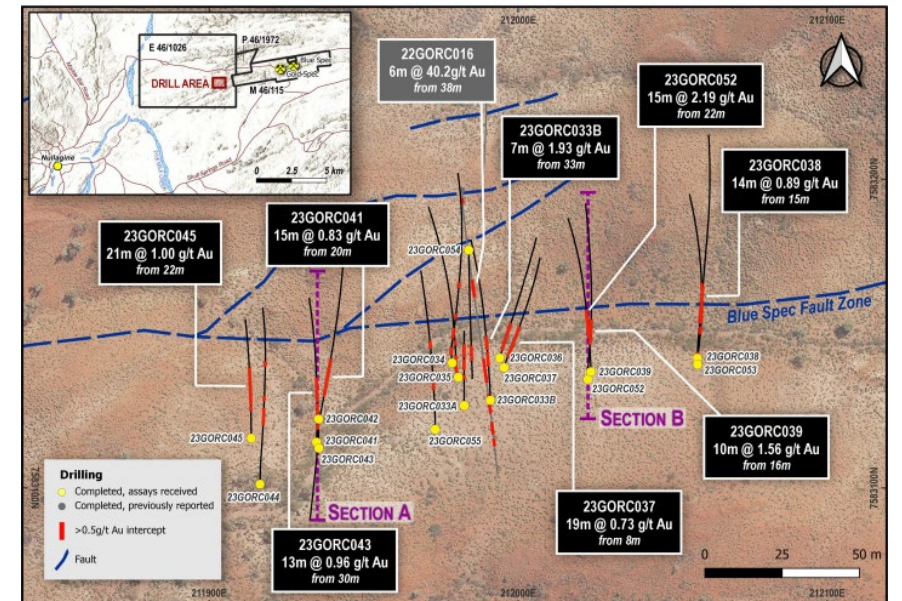
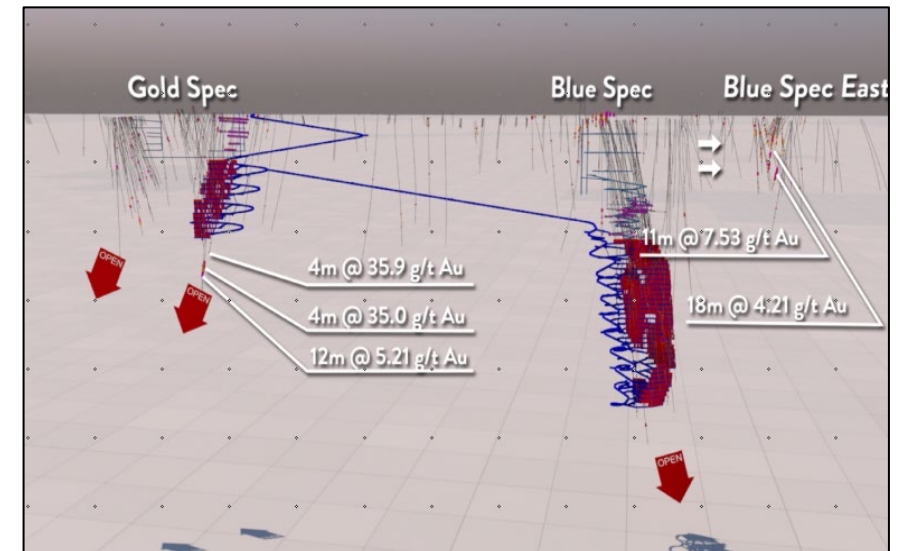
Cut-Off (g/t)	Indicated			Inferred			Total		
	Mt	Au (g/t)	Koz	Mt	Au (g/t)	Koz	Mt	Au (g/t)	Koz
1.5	1.0	2.87	89	1.8	3.31	162	2.7	2.83	250
2.0	0.7	3.36	72	1.2	4.08	130	1.9	3.33	202

## Blue Spec

- Feasibility Study (September 2022) delivered a Maiden Reserve for Blue Spec of 83koz @ 11.2g/t combined with a 17koz @ 5.5g/t Reserve at Copenhagen provides a combined 100koz Reserve
- Float (+95% recovery Au) and sell high grade concentrate (Sb credit pays for smelting charge)
- 30koz AuEq pa production profile over an initial 4-year mine life with significant opportunity for mine-life extensions
- Larger Central Sulphide Processing Hub Optionality to incorporate Nullagine sulphide deposits, Blue Spec (190koz @ 24.3g/t Au) and the Felix discovery

## New Felix Discovery

- Felix gold discovery that is 100% owned and located just 5km from the Blue Spec deposit
- Felix has the largest soil anomaly in the Mosquito Creek Basin, that hosts >1 Mozs
- Probability distribution modelling of gold grades suggest a well-endowed gold system
- Felix exhibits two mineralisation styles: one is high-grade shear-hosted mineralisation analogous to the 1oz/t Blue Spec deposit and the second is disseminated mineralisation
  - 6m @ 40.15g/t Au from 38m in 22GORC016 (including 1m @ 220.17g/t Au from 39m)
  - 41m @ 2.37g/t Au from 32m in 22GORC009



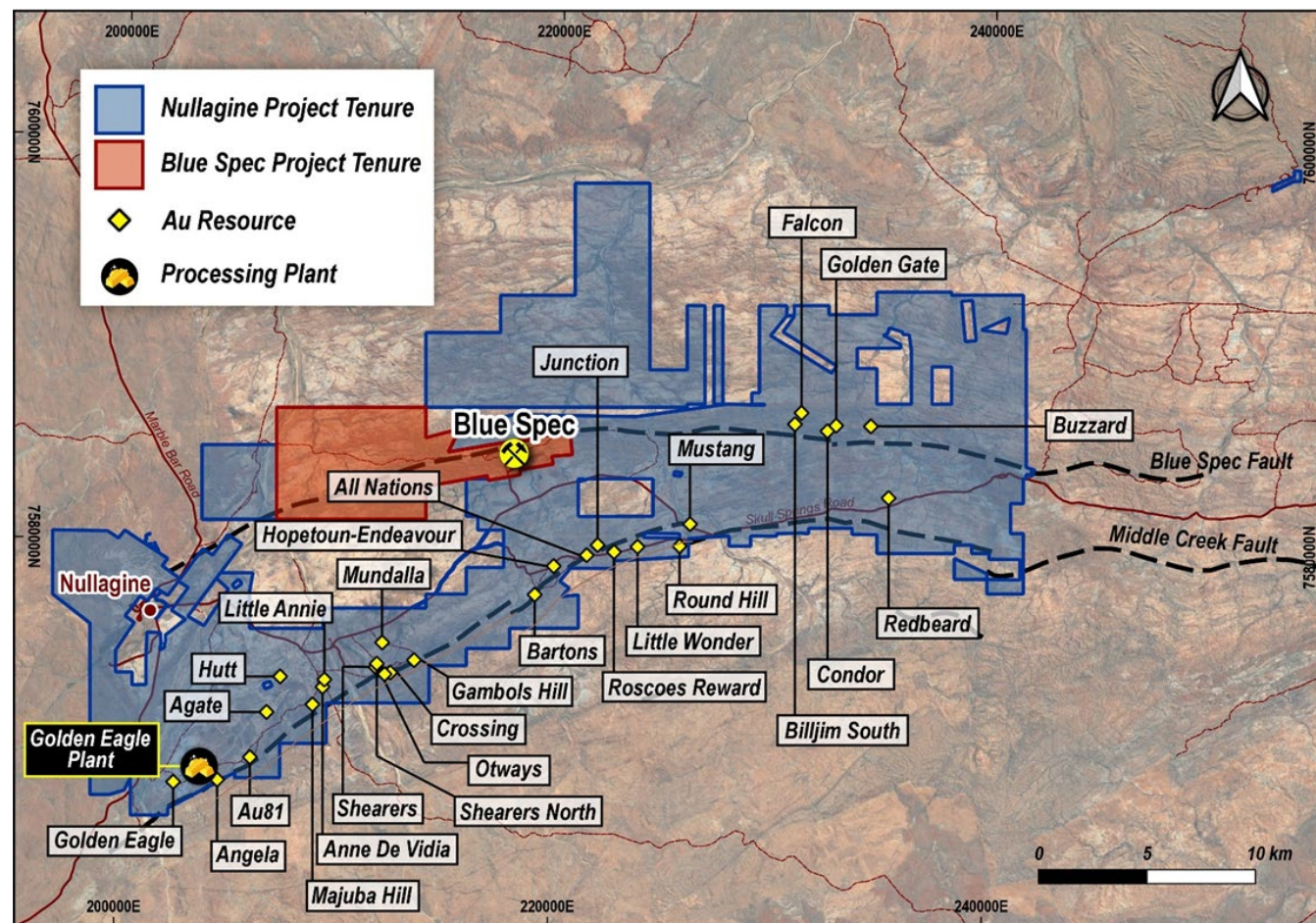
# Nullagine Gold Project Overview

## Nullagine Gold Project (“NGP”) acquired December 2023

- 533km<sup>2</sup> landholding - 65km of strike in Mosquito Creek Basin;
- Last open-pit designs were based on A\$1,650/oz gold price
- Golden Eagle processing plant 1.8Mtpa capacity
- Calidus assessing the economic feasibility of processing high-grade free-milling deposits at either Warrawoona or Nullagine
- Large sulphide deposits, look to incorporate with Blue Spec into larger sulphide production centre

## Historical Production

- Total production of 543koz @ 1.6g/t Au from FY12 to FY19
- Weighted average AISC of A\$1,235/oz between FY12 to FY18\*
- Current spot price of +A\$3,500/oz compares to weighted ave realised gold price of A\$1,596/oz between FY12 to FY18
- Placed on care and maintenance in December 2019
- Novo Resources processed material from Beatons Creek between 2021 to 2022 and produced 128,000 ozs



## Nullagine Gold Project including Blue Spec

\*The AISC reported by Millennium are presented on a factual basis. However, investors should note that Calidus has not performed an assessment of the relevant modifying factors, nor has it reported a mineral resource or ore reserve at Nullagine. There is no guarantee that Calidus will be able to achieve the same all in sustaining costs.

# Additional Oxide Deposits – Just scratched the surface

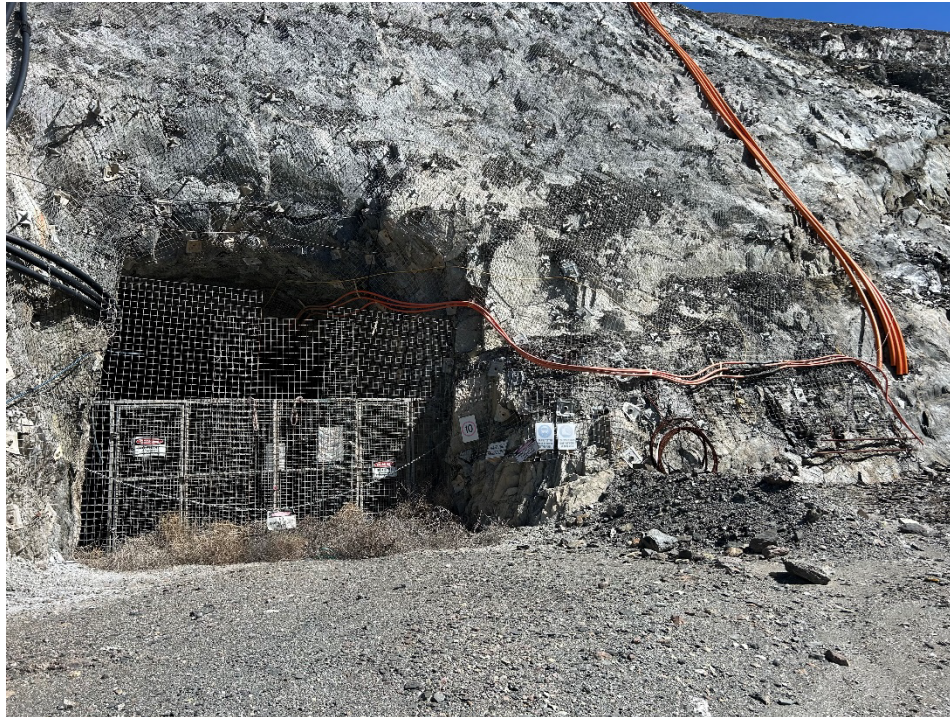
## Identify Readily Mineable 100% owned Oxide Material

- Golden Gate was one of the highest-grade open pit ore sources ever mined at the Nullagine Gold Project and has several pits only partially mined with existing approvals in place to enable rapid re-commencement of mining.
- Novo Resources completed revised interpretations and grade models across 5 known deposits.
- Optimisations and pit designs were then completed by Novo on these models. The preliminary optimisations utilising updated Calidus costs suggest that these deposits could provide additional economic mill feed to either Warrawoona or the existing plant situated in Nullagine over the next 2 years.



Golden Gate Mining Centre

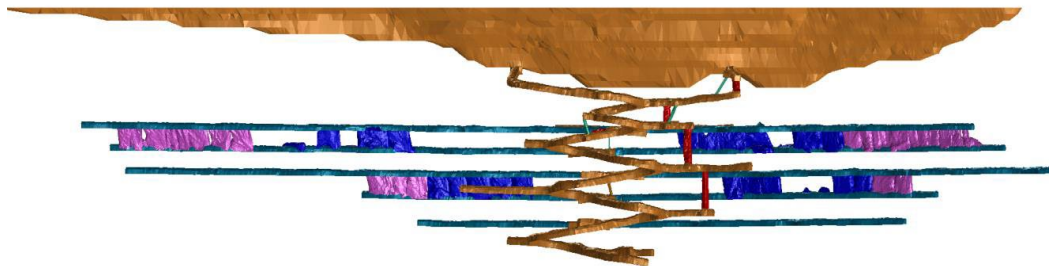
# Bartons Underground – Free Milling Ore Source



Bartons Portal – ready to go

## Unlocking Value From Bartons

- Deeper mineralisation at Bartons Underground is free-milling and can be treated through either the existing Warrawoona CIL plant or the existing plant situated at Nullagine.
- Underground development to 5 level with unmined stopes due to closure during production ramp-up
- Bartons mineralisation extends ~300m from surface and is open at depth



Current extent of development and stopeing - Bartons Underground

\*Please see the Company's announcement dated 23 December 2023 for further information. A competent person engaged by Calidus has not done sufficient work to define mineral estimates at Bartons Underground and do not represent disclosed mineral resources reported by Calidus

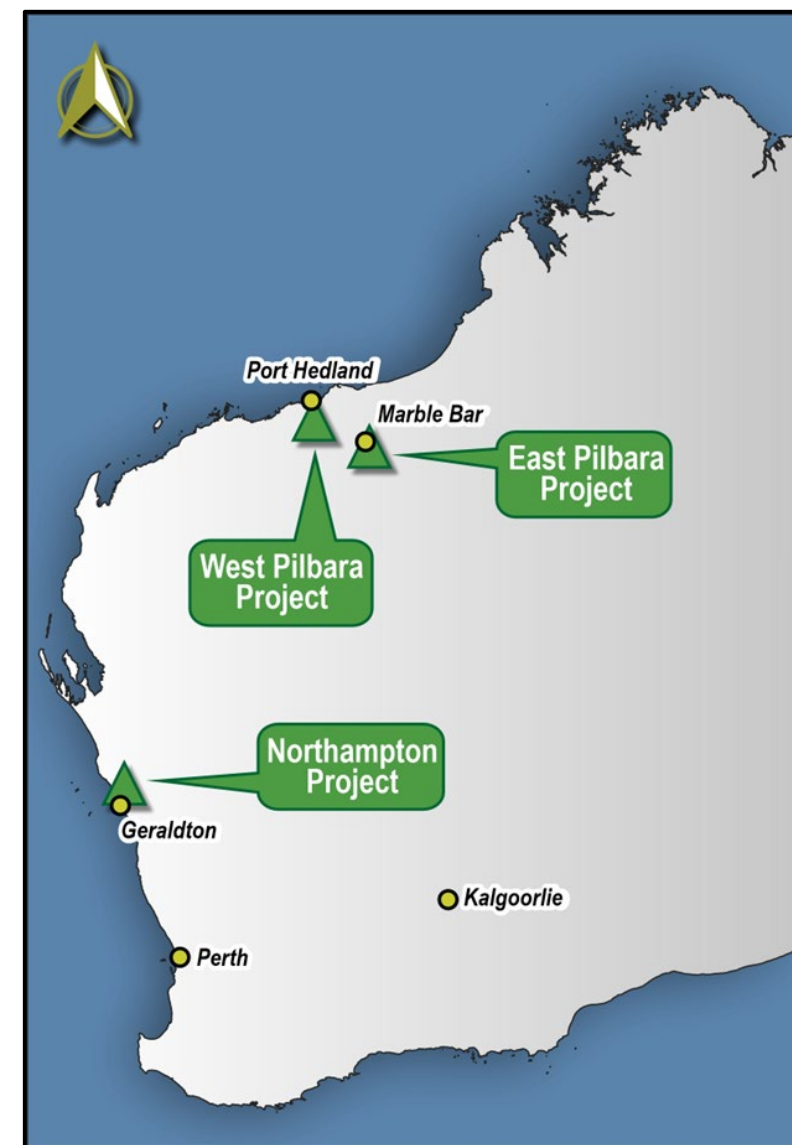


# Pirra Lithium JV – Retaining the Lithium Upside



## Pirra Lithium covers 1,681km<sup>2</sup> of highly prospective lithium tenure across Western Australia

- Large 82km<sup>2</sup> in the West Pilbara along strike from major lithium discoveries (Wildcat Resources, De Grey)
- Massive 1,303km<sup>2</sup> in the East Pilbara both at Marble Bar surrounding Global Lithium's Archer deposit (10.5Mt @ 1.0% Li<sub>2</sub>O) and at Spear Hill, where Pirra Lithium has discovered lithium pegmatites
- 289km<sup>2</sup> in the Northampton on similar geology to recent lithium discoveries in the Gascoyne
- Well-funded with \$5M
- Ownership - Calidus 40%, SQM 40%, Haoma 20%
- Calidus has elected not to proceed with the demerger of Pirra Lithium following the SQM investment and will retain its interest in Pirra

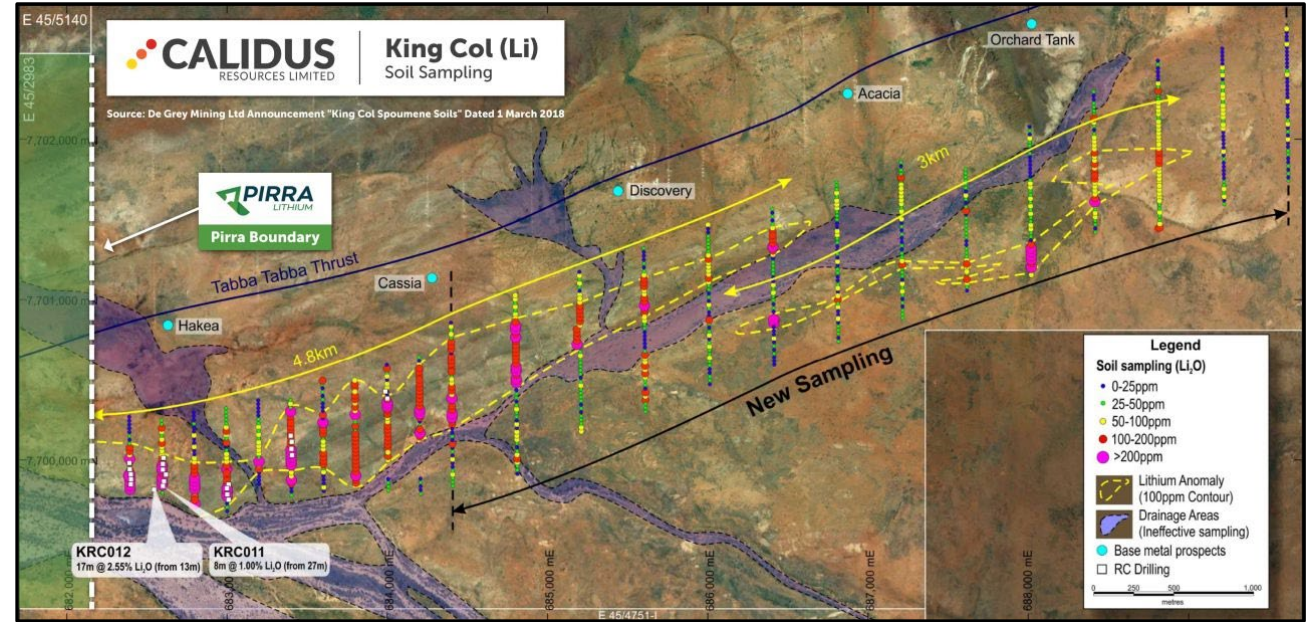
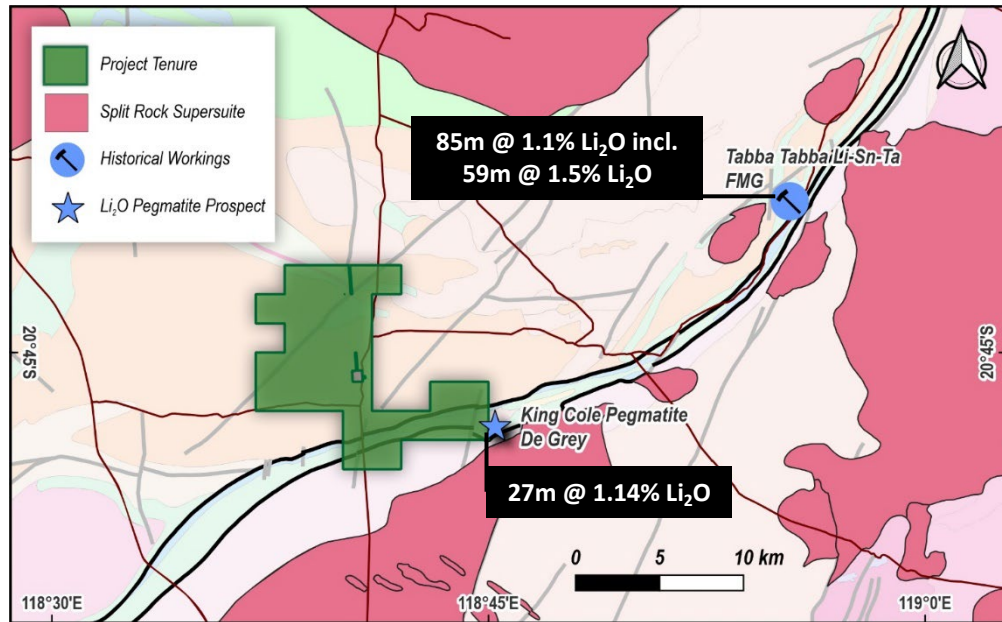


August 2021
   
 Kathleen Valley
   
 A\$30M + 1% Royalty
   
  
 Mkt Cap: A\$2.5B

September 2021
   
 Mt Ida
   
 A\$11M
   
  
 Mkt Cap: A\$200M

October 2022
   
 Manna Lithium
   
 A\$87M
   
  
 Mkt Cap: A\$117M

# West Pilbara Lithium – Tabba Tabba Shear



## Large 82km<sup>2</sup> in the West Pilbara along strike from major lithium discoveries

- Covers approximately 10km of the Tabba Tabba Shear
- ~20km along strike from Wildcat Resources' (WC8) major lithium discovery of 99.0m @ 1.2% Li<sub>2</sub>O and 180m @ 1.1% Li<sub>2</sub>O, resulting in a market capitalisation of \$871M
- 400m along strike from De Grey's King Col lithium pegmatite (27.3m @ 1.14% Li<sub>2</sub>O)
- Largely unexplored land package with no systematic or modern exploration for lithium bearing pegmatites
- Drilling to commence H1 2024 subject to heritage surveys
- Participation in funding and exploration techniques by SQM will allow for accelerated lithium exploration programs

# East Pilbara – Proximity to Existing Lithium Deposits

## Massive 1,303km<sup>2</sup> in the East Pilbara both at Marble Bar

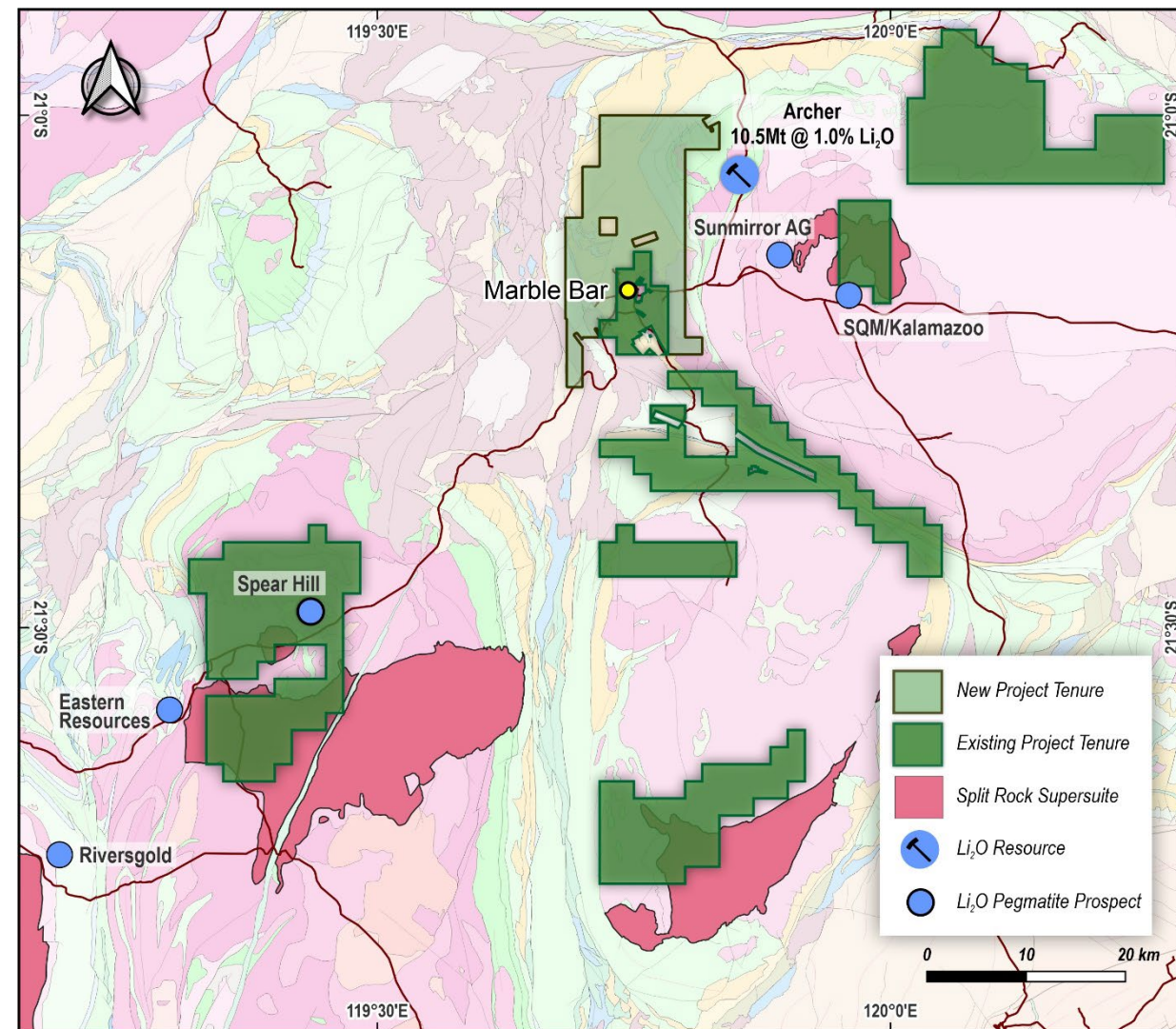
- Surrounding Global Lithium's Archer deposit (10.5Mt @ 1.0% Li<sub>2</sub>O)
- Tenements mainly cover previous tin and tantalum mining areas, a common denominator in existing lithium mines
- Largely unexplored land package with no systematic or modern exploration for lithium bearing pegmatites
- Calidus has discovered lithium bearing pegmatites at Spear Hill that warrant follow-up exploration

## Spear Hill Prospect

- Maiden drill program completed, tested only 1km of strike, demonstrating 250m continuity down-dip with mineralisation open at depth
- Significant results included:
  - 2m @ 1.11% Li<sub>2</sub>O from 19m in 22PIRC026
  - 2m @ 1.09% Li<sub>2</sub>O from 5m in 22PIRC020

## Tabba Tabba South Project

- First-pass soil sampling concluded elevated concentrations of Li, and pathfinder elements Nb and Ta, have highlighted a corridor of interest
- Planning is underway for wide-spaced RC drilling to test the areas of interest



# Foundations to Deliver Shareholder Value



**Mine plan in place at Warrawoona to achieve a production rate of 120koz Au per annum in three years**



**Increasing production profile and cashflow generation through incorporation of high-grade Haoma JV regional deposits, including Bulletin deposit of 63koz @ A\$1,730/oz over an initial 2-year mine life**



**Opportunity to enhance production profile, cash generation and extend mine life at Warrawoona through Resource conversion and through the assessment of high-grade deposits within the Haoma JV and Nullagine Gold Project**



**Pursuing the new Felix discovery has the potential to significantly step-change production and/or extend mine life**



**Retaining interest in Pirra Lithium which holds a dominant WA lithium landholding near existing discoveries (Wildcat) and deposits (Global Lithium) funded in combination with lithium experts SQM**

# Appendix A: Warrawoona Resource and Reserves

## Mineral Resource<sup>1</sup>

Deposit	Cut-Off	Measured			Indicated			Inferred			Total		
	(g/t)	Mt	Au (g/t)	KOz	Mt	Au (g/t)	KOz	Mt	Au (g/t)	KOz	Mt	Au (g/t)	KOz
<b>Klondyke Open Pit</b>	<b>0.3</b>	<b>1.1</b>	<b>1.02</b>	<b>36</b>	<b>13.0</b>	<b>0.97</b>	<b>404</b>	<b>17.0</b>	<b>0.73</b>	<b>400</b>	<b>31.1</b>	<b>0.84</b>	<b>840</b>
<i>including</i>	0.5	0.98	1.1	34	11.0	1.07	377	10.6	0.94	320	22.5	1.01	731
<b>Klondyke UG</b>	<b>1.5</b>				<b>1.0</b>	<b>2.87</b>	<b>89</b>	<b>1.8</b>	<b>2.82</b>	<b>162</b>	<b>2.7</b>	<b>2.83</b>	<b>250</b>
<i>including</i>	2.0				0.7	3.36	72	1.2	3.31	130	1.9	3.33	202
Copenhagen	0.5				0.2	5.58	34	0.1	2.65	9	0.3	4.54	43
Coronation	0.5				0.6	1.88	34	0.2	1.24	9	0.8	1.69	43
Fieldings Gully	0.5				0.3	1.80	16	0.3	1.87	20	0.6	1.84	36
<b>Blue Spec Project</b>					<b>0.1</b>	<b>31.1</b>	<b>95</b>	<b>0.1</b>	<b>20.0</b>	<b>96</b>	<b>0.2</b>	<b>24.3</b>	<b>190</b>
<i>Blue Spec</i>	<i>Note 1</i>				0.1	31.5	71	0.1	21.2	66	0.2	25.5	136
<i>Gold Spec</i>	<i>Note 1</i>				0.02	30.1	24	0.1	17.9	30	0.1	21.8	54
Blue Bar <sup>2</sup>	0.7				0.2	2.06	12	0.1	1.63	6	0.3	1.87	18
Bulletin <sup>2</sup>	0.7				0.4	4.3	59	0.4	3.6	42	0.8	4	100
<b>Total</b>		<b>1.1</b>	<b>1.02</b>	<b>36</b>	<b>15.7</b>	<b>1.47</b>	<b>743</b>	<b>19.6</b>	<b>1.11</b>	<b>696</b>	<b>36.8</b>	<b>1.28</b>	<b>1,519</b>

Note 1: Mineral Resources for Blue Spec were calculated utilising metal pricing, recoveries and other payability assumptions detailed in ASX Announcement 29 September 2022 - "Maiden Blue Spec Reserve underpins expansion plan for Warrawoona"

Note 2: Blue Bar and Bulletin are part of the Haoma JV where Calidus has a 60% profit share

## Ore Reserves<sup>1</sup>

Deposit	Cut-Off	Proven			Probable			Total		
	(g/t)	Mt	Au (g/t)	koz	Mt	Au (g/t)	koz	Mt	Au (g/t)	koz
Klondyke Open Pit	0.3	0.9	1.0	29	3.6	1.0	109	4.5	1.0	138
Klondyke Underground	1.2				1.9	2.1	120	1.9	2.1	120
St George Open Pit	0.3				0.3	0.9	9	0.3	0.9	9
Copenhagen Open Pit	1.88				0.1	5.5	17	0.1	5.5	17
Fieldings Gully	0.35				0.3	1.4	13	0.3	1.4	13
Blue Spec	<i>Note 1</i>				0.2	11.2	83	0.2	11.2	83
Bulletin <sup>2</sup>	0.7				0.6	2.9	55	0.6	2.9	55
<b>Total</b>		<b>0.9</b>	<b>1.0</b>	<b>29</b>	<b>7.0</b>	<b>1.8</b>	<b>406</b>	<b>7.9</b>	<b>1.7</b>	<b>435</b>

Note 1: Mineral Reserves for Blue Spec were calculated on a cut-off using Net smelter return and Gold Equivalent using metal pricing, recoveries and other payability assumptions detailed in ASX Announcement 29 September 2022 - "Maiden Blue Spec Reserve underpins expansion plan for Warrawoona"

Note 2: Bulletin are part of the Haoma JV where Calidus has a 60% profit share



Thank you

**HEAD OFFICE**

Suite 12  
11 Ventnor Avenue  
West Perth WA 6005

**Tel:** 08 9178 8950

**E-mail:** [info@calidus.com.au](mailto:info@calidus.com.au)

