

ASX ANNOUNCEMENT

RRL1823D

08 June 2022

New 'Midway' lode at Youanmi Gold Project extended to 160m down plunge

ROX RESOURCES LIMITED

ASX: RXL

Rox Resources Limited (ASX: RXL) is an Australian listed company with advanced gold projects in Western Australia: the Youanmi Gold Project and the Mt Fisher Gold project.

DIRECTORS

Mr Stephen Dennis
Chairman

Mr Alex Passmore
Managing Director

Dr John Mair
Non-Executive Director

Shares on Issue	168.9m
Share Price	\$0.32
Market Cap.	\$54.0m
Cash	\$6.9m

(as at 31 Mar 22)

Level 2, 87 Colin Street,
West Perth WA 6005

+61 8 9226 0044

admin@roxresources.com.au
www.roxresources.com.au

Follow Rox:



Highlights:

- New hanging-wall lode 'Midway' continues to return high-grade results as follow up drilling confirms at least 160m of plunge continuity
- New high-grade intersections 160m up plunge of discovery drillhole (RXDD022) include:
 - RXRC449: 8m @ 5.1g/t Au from 212m including 4m @ 9.45g/t Au from 212m and 4m @ 6.03g/t Au from 140m
- Previously released high-grade intersections from Midway include:
 - RXDD022: 4m @ 45.5g/t Au from 341m, including 1.33m @ 129.3g/t Au from 341.75m (ASX: RXL 06/09/2021)
 - RXDD046: 3.87m @ 9.9g/t Au from 328.33m, including 2.45m @ 15.02 g/t Au from 328.8m (ASX: RXL 18/11/2021)
 - RXDD045: 3.62m @ 6.49g/t Au from 315.42m, including 0.86m @ 21.03g/t Au from 315.42m (ASX: RXL 18/11/2021)
- The Midway lode remains open down dip and along strike. Follow up drilling is planned to incorporate the new high-grade lode into the Youanmi gold project resource

West Australian focused gold exploration and development company, Rox Resources Limited ("Rox" or "the Company") (ASX: RXL), in conjunction with its joint venture partner Venus Metals Corporation Limited (ASX: VMC), is pleased to provide an update on drill results from the Youanmi Gold Project near Mt Magnet, WA, in the OYG JV area (Rox 70% and Manager, VMC 30%).

The highlights of this round of results include **8m @ 5.1g/t Au** from 212m including **4m @ 9.45g/t Au** from 212m and **4m @ 6.03g/t Au** from 140m intersected in RXRC449 and 0.78m @ 32.98g/t Au from 256.3m intersected in RXDD046. The results continue to define the continuity of the recently discovered high-grade Midway Lode in the historically underexplored hanging-wall area 300m south of the Youanmi Mine (Table 1, Figure 1).

Managing Director Alex Passmore commented: "These results from Midway extend the known extent of the lode significantly up plunge and demonstrate good continuity. This prospect has strong potential for contributing additional ounces to the overall project resource, and highlights

the potential for new high-grade lodes in a previously untested area. We look forward to drilling out the interpreted oxide zone at surface which may contribute to the early part of mine plan.”

High-Grade Midway Lode Extended Up Plunge

Drilling results reported in September 2021 identified high-grade mineralisation in a newly delineated position in the hanging wall to the main Youanmi Mine Lode. This zone of mineralisation is situated 300m south of the Youanmi underground mine between the Bunker Pit and the Youanmi Main Pit (Figures 1 and 2).

Diamond drilling to follow up on the previously reported discovery hole RXDD022 (4m @ 45.5g/t Au from 341m, including 1.33m @ 129.3g/t Au from 341.75m) (ASX: RXL 06/09/2021) has been ongoing.

Follow up results reported in November 2021 confirmed the continuity of high-grade mineralisation. RXDD045 tested 40m up dip of RXDD022, while RXDD046 tested 40m down plunge, with both holes intersecting similar style high-grade mineralisation (RXDD046: 3.87m @ 9.9g/t Au from 328.33m, including 2.45m @ 15.02 g/t Au from 328.8m, RXDD045: 3.62m @ 6.49g/t Au from 315.42m, including 0.86m @ 21.03g/t Au from 315.42m) (ASX: RXL 18/11/2021).

An RC hole was recently completed 160m up plunge of RXDD022 to determine lode continuity into shallow depths previously untested by drilling. This has now returned the following strong results:

- RXRC449: 8m @ 5.1g/t Au from 212m including 4m @ 9.45g/t Au from 212m and 4m @ 6.03g/t Au from 140m.

This drilling confirms at least 160m of plunge continuity for high-grade mineralisation at Midway.

Additionally sampling of shear zones identified in previously reported drillholes has identified a second lode at Midway, with new results including:

- RXDD046: 0.78m @ 32.98g/t Au from 256.3m and 1.76m @ 3.63g/t Au from 307m
- RXDD022: 2m @ 3.85g/t Au from 307m

These results together with recent drilling demonstrate that the Midway area has strong potential to host a significant mineralised system with evidence for multiple lodes.

Gold mineralisation at Midway is shear zone hosted within highly altered tholeiitic and komatiitic basaltic rocks. The alteration assemblages consist of sericite, quartz, carbonate and biotite. Gold occurs in association with pyrite and lesser arsenopyrite. The Midway lode remains open along strike and down dip (Figures 1 and 2).

The results to date define at least two gold lodes striking WNW and dipping towards the SW. Structural analysis of the mineralised zones (shear fabric and stretching mineral lineation) indicate the lodes are dipping steeply towards the southwest and show a high-grade component plunging at 50 degrees to the WNW. The orientation of the new lodes is different to previously identified lodes at Youanmi, which strike NW to NNW (Figure 1). This new orientation of mineralised structure opens up several new exploration targets at the project. Further drilling is planned.

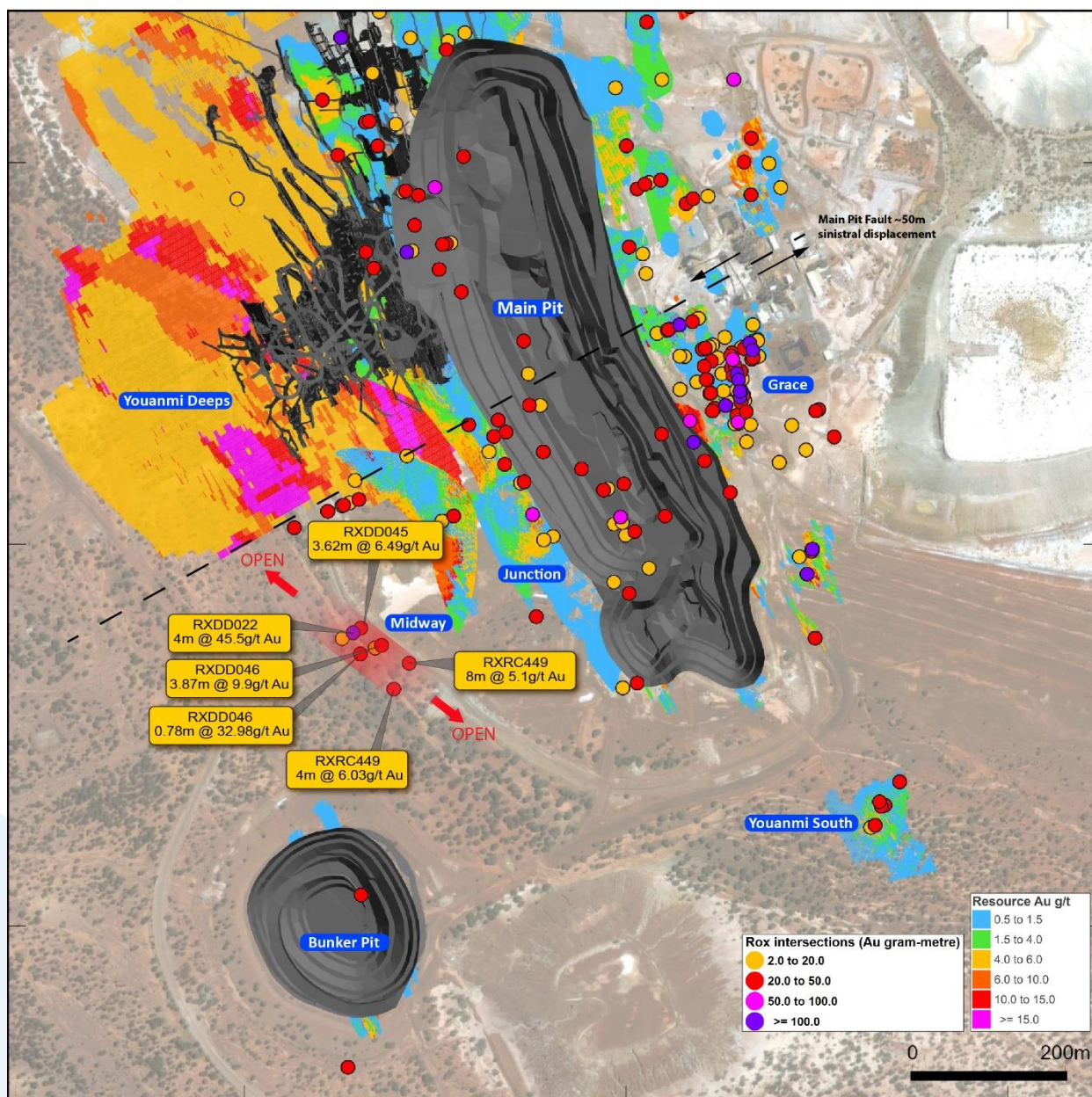


Figure 1. Plan view of Youanmi Mine Area with resource block model and Rox drill intercepts. Midway sits outside areas of known mineralisation.

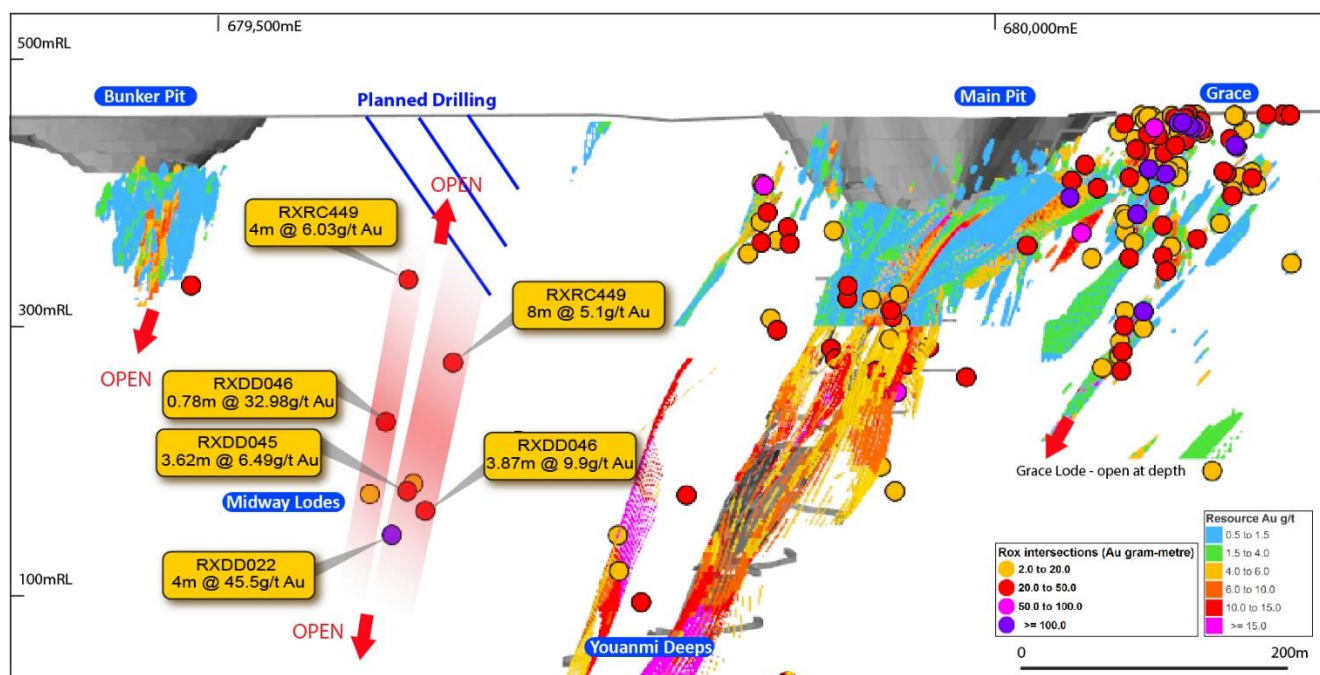


Figure 2. View through the Youanmi lode system looking north-west including drill intercepts shown on Figure 1, pits and underground development and June 2021 resource model.

Forward Plan

The Company continues its approach of simultaneously exploring and conducting mining studies. Ongoing and planned activities at Youanmi gold project include:

- Inferred to indicated resource conversion and exploration drilling;
- Feasibility level underground and open pit metallurgical testwork;
- Scoping level study processing plant design and costing; and
- Mine design and environmental work.

The Company looks forward to providing updates on these in due course.

Authorised for release to the ASX by the Board of Rox Resources Limited.

***** ENDS *****

For more information:

Alex Passmore
Managing Director
Rox Resources Limited
Tel: +61 8 9226 0044
E: admin@roxresources.com.au

Matt Hogan
Managing Director
Venus Metals Corporation Limited
Tel: +61 8 9321 7541

Table 1 – Significant Intersections

Hole ID	Prospect	Drill type	From	to	Interval	Au g/t	Au g.m
RXDD022	Midway	DD	307	309	2	3.85	7.7
RXDD022	Midway	DD	341	346	4	45.5	182
including	Midway	DD	341.75	343.08	1.33	129.3	171.97
RXDD045	Midway	DD	315.42	319.04	3.62	6.49	23.5
Including	Midway	DD	315.42	316.28	0.86	21.03	18.1
RXDD046	Midway	DD	256.3	257.08	0.78	32.98	25.72
RXDD046	Midway	DD	307	308.76	1.76	3.63	6.38
RXDD046	Midway	DD	328.33	332.2	3.87	9.9	38.31
Including	Midway	DD	328.8	331.25	2.45	15.02	36.8
RXRC449	Midway	RC	80	84	4	1.16	4.62
RXRC449	Midway	RC	140	144	4	6.03	24.11
RXRC449	Midway	RC	180	184	4	0.75	3.02
RXRC449	Midway	RC	212	220	8	5.1	40.8
Including	Midway	RC	212	216	4	9.45	37.8
RXRC449	Midway	RC	243	244	1	0.51	0.51
RXRC449	Midway	RC	249	250	1	2.57	2.57
RXRC449	Midway	RC	252	253	1	2.34	2.34

Table 2 - Collar Locations and Drilling Details

Hole ID	Prospect	Drill	East	North	RL	Depth	Dip	Azi	Comments
RXRC445	Mine Lode	RC	679607	6833875	477	300	-58	82	Assays pending
RXRC446	Mine Lode	RC	679623	6833861	477	300	-54	78	Assays pending
RXRC448	Mine Lode	RC	679604	6833997	472	270	-56	62	Assays pending
RXRC449	Midway	RC	679658	6833246	457	305	-60	30	
RXRC450	Mine Lode	RC	679595	6834015	476.88	270	-55	60	Assays pending
RXRC451	Mine Lode	RC	679556	6834137	481	276	-65	65	Assays pending
RXRC453	Mine Lode	RC	679686	679686	470	156	-70	65	Assays pending
RXDD022	Midway	DD	679528	6833315	457	613.3	-70	58	
RXDD045	Midway	DD	6795289	6833315	457	351.8	-63	56	
RXDD046	Midway	DD	679552	6833305	457	372.8	-60	60	

Competent Person Statements

Exploration Results

The information in this report that relates to Data and Exploration Results is based on information compiled and reviewed by Mr Gregor Bennett a Competent Person who is a Member of the Australian Institute Geoscientists (AIG) and Exploration Manager at Rox Resources. Mr Bennett has sufficient experience relevant to the style of mineralisation and type of deposit under consideration and to the activity which he has undertaken to qualify as a Competent Person as defined in the 2012 Edition of the 'Australasian Code for the Reporting of Exploration Results, Mineral Resources and Ore Reserves'. Mr Bennett consents to the inclusion in the report of the matters based on his information in the form and context in which it appears.

Where reference is made to previous releases of exploration results in this announcement, the Company confirms that it is not aware of any new information or data that materially affects the information included in those announcements and all material assumptions and technical parameters underpinning the exploration results included in those announcements continue to apply and have not materially changed.

The information in this report that relates to previous Exploration Results was prepared and first disclosed under the JORC Code 2012 and has been properly and extensively cross-referenced in the text to the date of the original announcement to the ASX.

Resource Statements

The Statement of Estimates of Mineral Resources for the Youanmi Near Surface Resource was reported by Rox in accordance with ASX Listing Rule 5.8 in the announcement released to the ASX on 20th April 2022. Rox confirms it is not aware of any new information or data that materially affects the information included in the previous announcements and that all material assumptions and technical parameters underpinning the estimates in the previous announcements continue to apply and have not materially changed.

The Statement of Estimates of Mineral Resources for the Youanmi Underground Resource was reported by Rox in accordance with ASX Listing Rule 5.8 in the announcement released to the ASX on 20th January 2022. Rox confirms it is not aware of any new information or data that materially affects the information included in the previous announcements and that all material assumptions and technical parameters underpinning the estimates in the previous announcements continue to apply and have not materially changed.

The Statement of Estimates of Mineral Resources that relates to gold Mineral Resources for the Mt Fisher project was reported by Rox in accordance with ASX Listing Rule 5.8 in the announcement released to the ASX on 11th July 2018. Rox confirms it is not aware of any new information or data that materially affects the information included in the previous announcements and that all material assumptions and technical parameters underpinning the estimates in the previous announcements continue to apply and have not materially changed.

Forward-Looking Statements

This document may include forward-looking statements. Forward-looking statements include, but are not limited to, statements concerning Rox Resources Limited planned exploration program(s) and other statements that are not historical facts. When used in this document, the words such as "could," "plan," "estimate," "expect," "intend," "may", "potential," "should," and similar expressions are forward looking statements.

About Rox Resources

Rox Resources (ASX:RXL) is a West Australian focused gold exploration and development company. It is the 70 per cent owner and operator of the historic Youanmi Gold Project near Mt Magnet, approximately 480 kilometres northeast of Perth, and wholly-owns the Mt Fisher Gold project approximately 140 kilometres southeast of Wiluna. Youanmi has a Total Mineral Resource of 3,199 koz of contained gold, with potential for further expansion with the integration of existing prospects into the Resource and further drilling. Youanmi was a high-grade gold mine and produced 667,000oz of gold (at 5.47 g/t Au) before it closed in 1997. Youanmi is classified as a disturbed site and is on existing mining leases which has significant existing infrastructure to support a return to mining operations.

JORC Table 1 - Section 1 Data and Sampling Techniques

Criteria	JORC Code explanation	Commentary
Sampling techniques	<i>Nature and quality of sampling (e.g. cut channels, random chips, or specific specialised industry standard measurement tools appropriate to the minerals under investigation, such as down hole gamma sondes, or handheld XRF instruments, etc). These examples should not be taken as limiting the broad meaning of sampling.</i>	<p>RC hole diameter was 5.5" (140 mm) reverse circulation percussion (RC). Sampling of RC holes was undertaken by collecting 1m cone split samples at intervals.</p> <p>Diamond drill hole core size is NQ2 size diameter through the mineralisation. Sampling of diamond holes was by cut half core as described further below.</p> <p>Drill holes were generally angled at -60° towards grid northeast (but see Table for individual hole dips and azimuths) to intersect geology as close to perpendicular as possible.</p>
	<i>Include reference to measures taken to ensure sample representivity and the appropriate calibration of any measurement tools or systems used</i>	Drillhole locations were picked up by differential GPS. Logging of drill samples included lithology, weathering, texture, moisture and contamination (as applicable). Sampling protocols and QAQC are as per industry best practice procedures.
	<i>Aspects of the determination of mineralisation that are Material to the Public Report. In cases where 'industry standard' work has been done this would be relatively simple (e.g. 'reverse circulation drilling was used to obtain 1 m samples from which 3 kg was pulverised to produce a 30 g charge for fire assay'). In other cases more explanation may be required, such as where there is coarse gold that has inherent sampling problems. Unusual commodities or mineralisation types (e.g. submarine nodules) may warrant disclosure of detailed information</i>	<p>RC drillholes were sampled on 1m intervals using a cone splitter.</p> <p>Diamond core is dominantly NQ2 size, sampled on geological intervals, with a minimum of 0.2 m up to a maximum of 1.2 m. HQ and NQ2 holes were cut in half, with one half sent to the lab and one half retained.</p> <p>Samples were sent to Intertek Genalysis in Perth, crushed to 10mm, dried and pulverised (total prep) in LM5 units (Some samples > 3kg were split) to produce a sub-sample. RC and diamond pulps were analysed by 50g Fire Assay with ICP-OES (Intertek code FA50/OE).</p>
Drilling techniques	<i>Drill type (e.g. core, reverse circulation, open-hole hammer, rotary air blast, auger, Bangka, sonic, etc) and details (e.g. core diameter, triple or standard tube, depth of diamond tails, face-sampling bit or other type, whether core is oriented and if so, by what method, etc).</i>	Drilling technique was Reverse Circulation (RC) and diamond core (DD). The RC hole diameter was 140mm face sampling hammer. Hole depths reported range from 200m to 300m for RC and 300m to 600m for diamond.
Drill sample recovery	<i>Method of recording and assessing core and chip sample recoveries and results assessed</i>	RC drill recoveries were high (>90%).
	<i>Measures taken to maximise sample recovery and ensure representative nature of the samples</i>	Samples were visually checked for recovery, moisture and contamination and notes made in the logs.
	<i>Whether a relationship exists between sample recovery and grade and whether sample bias may have occurred due to preferential loss/gain of fine/coarse material.</i>	There is no observable relationship between recovery and grade, and therefore no sample bias.

Criteria	JORC Code explanation	Commentary
Logging	<i>Whether core and chip samples have been geologically and geotechnically logged to a level of detail to support appropriate Mineral Resource estimation, mining studies and metallurgical studies.</i>	<p>Detailed geological logs have been carried out on all RC, but no geotechnical data have been recorded (or is possible to be recorded due to the nature of the sample).</p> <p>Detailed geological and geotechnical logs were carried out on all diamond drill holes for recovery, RQD, structures etc. which included structure type, dip, dip direction, alpha angle, beta angle, texture, shape, roughness, fill material, and this data is stored in the database.</p> <p>The geological data would be suitable for inclusion in a Mineral Resource estimate.</p>
	<i>Whether logging is qualitative or quantitative in nature. Core (or costean, channel, etc) photography.</i>	Logging of diamond core and RC chips recorded lithology, mineralogy, mineralisation, weathering, colour, and other sample features. RC chips are stored in plastic RC chip trays.
	<i>The total length and percentage of the relevant intersections logged</i>	All holes were logged in full.
Sub-sampling techniques and sample preparation	<i>If core, whether cut or sawn and whether quarter, half or all core taken.</i>	Drill core was cut in half on site using a core saw. All samples were collected from the same side of the core, preserving the orientation mark in the kept core half.
	<i>If non-core, whether riffled, tube sampled, rotary split, etc and whether sampled wet or dry.</i>	RC samples were collected on the drill rig using a cone splitter. If any mineralised samples were collected wet these were noted in the drill logs and database.
	<i>For all sample types, the nature, quality and appropriateness of the sample preparation technique.</i>	<p>The sample preparation followed industry best practice.</p> <p>Fire Assay samples were dried, coarse crushing to ~10mm, followed by pulverisation of the entire sample in an LM5 or equivalent pulverising mill to a grind size of 85% passing 75 micron.</p>
	<i>Quality control procedures adopted for all sub-sampling stages to maximise representivity of samples.</i>	Field QC procedures involve the use of Certified Reference Materials (CRM's) as assay standards, along with duplicates and blank samples. The insertion rate of these was approximately 1:20.
	<i>Measures taken to ensure that the sampling is representative of the in situ material collected, including for instance results for field duplicate/second-half sampling.</i>	For RC drilling field duplicates were taken on a routine basis at an approximate 1:20 ratio using the same sampling techniques (i.e. cone splitter) and inserted into the sample run. No diamond core field duplicates were taken.
	<i>Whether sample sizes are appropriate to the grain size of the material being sampled.</i>	The sample sizes are considered more than adequate to ensure that there are no particle size effects relating to the grain size of the mineralisation which lies in the percentage range.
Quality of assay data and laboratory tests	<i>The nature, quality and appropriateness of the assaying and laboratory procedures used and whether the technique is considered partial or total.</i>	The analytical technique involved Fire Assay 50g.

Criteria	JORC Code explanation	Commentary
	<i>For geophysical tools, spectrometers, handheld XRF instruments, etc, the parameters used in determining the analysis including instrument make and model, reading times, calibrations factors applied and their derivation, etc.</i>	No geophysical or portable analysis tools were used to determine assay values stored in the database.
	<i>Nature of quality control procedures adopted (e.g. standards, blanks, duplicates, external laboratory checks) and whether acceptable levels of accuracy (i.e. lack of bias) and precision have been established.</i>	Internal laboratory control procedures involve duplicate assaying of randomly selected assay pulps as well as internal laboratory standards. All of these data are reported to the Company and analysed for consistency and any discrepancies.
Verification of sampling and assaying	<i>The verification of significant intersections by either independent or alternative company personnel.</i>	Senior personnel from the Company have visually inspected mineralisation within significant intersections.
	<i>The use of twinned holes.</i>	Two twin RC holes have been completed at the Grace Prospect and confirm reliability of previous results.
	<i>Documentation of primary data, data entry procedures, data verification, data storage (physical and electronic) protocols.</i>	Primary data was collected using a standard set of Excel templates on Toughbook laptop computers in the field. These data are transferred to Geobase Pty Ltd for data verification and loading into the database.
	<i>Discuss any adjustment to assay data.</i>	No adjustments or calibrations have been made to any assay data.
Location of data points	<i>Accuracy and quality of surveys used to locate drillholes (collar and down-hole surveys), trenches, mine workings and other locations used in Mineral Resource estimation.</i>	Drill hole locations have been established using a field GPS unit.
	<i>Specification of the grid system used.</i>	The grid system is MGA_GDA94, zone 50 for easting, northing and RL.
	<i>Quality and adequacy of topographic control.</i>	The topography of the mined open pits is well defined by historic monthly survey pickups
Data spacing and distribution	<i>Data spacing for reporting of Exploration Results.</i>	RC and diamond drill hole spacing varies 40-200 metres between drill sections, with some areas at 40 metre drill section spacing. Down dip step-out distance varies 20-100 metres.
	<i>Whether the data spacing and distribution is sufficient to establish the degree of geological and grade continuity appropriate for the Mineral Resource and Ore Reserve estimation procedure(s) and classifications applied.</i>	Data spacing and distribution are sufficient to establish the degree of geological and grade continuity appropriate for JORC(2012) classifications applied.

Criteria	JORC Code explanation	Commentary
	<i>Whether sample compositing has been applied.</i>	No sample compositing has occurred for diamond core drilling. Sample intervals are based on geological boundaries with even one metre samples between. For RC samples, 1m samples through target zones were sent to the laboratory for analysis. The remainder of the hole was sampled using 4m composite samples. For 4m composite samples >0.2g/t Au, 1m samples were collected and sent to the laboratory for analysis.
Orientation of data in relation to geological structure	<i>Whether the orientation of sampling achieves unbiased sampling of possible structures and the extent to which this is known, considering the deposit type.</i>	The mineralisation strikes generally WNW and dips to the SW at approximately -60 degrees. The drill orientation was 065 and -60 dip. Drilling is believed to be generally perpendicular to strike.
	<i>If the relationship between the drilling orientation and the orientation of key mineralised structures is considered to have introduced a sampling bias, this should be assessed and reported if material.</i>	No sampling bias is believed to have been introduced.
Sample security	<i>The measures taken to ensure sample security.</i>	Sample security is managed by the Company. After preparation in the field samples are packed into polyweave bags and despatched to the laboratory. For a large number of samples these bags were transported by the Company directly to the assay laboratory. In some cases the sample were delivered by a transport contractor the assay laboratory. The assay laboratory audits the samples on arrival and reports any discrepancies back to the Company. No such discrepancies occurred.
Audits or reviews	<i>The results of any audits or reviews of sampling techniques and data.</i>	No audits have yet been completed.

JORC Table 1 - Section 2 Reporting of Exploration Results

Criteria	JORC Code explanation	Commentary
Mineral tenement and land tenure status	<i>Type, reference name/number, location and ownership including agreements or material issues with third parties such as joint ventures, partnerships, overriding royalties, native title interests, historical sites, wilderness or national park and environmental settings.</i>	Rox Resources Ltd is in a Joint Venture Agreement with Venus Metals Corporation Ltd under which it has a 70% interest in the Youanmi Gold Mine Joint Venture (OYG Joint Venture). Tenements in the JV consist of the following mining leases: M 57s /10, 51,76,97,109, 135, 160A, 164, 165, 166 and 167.
	<i>The security of the tenure held at the time of reporting along with any known impediments to obtaining a licence to operate in the area.</i>	The tenement is in good standing and no known impediments exist.

Criteria	JORC Code explanation	Commentary
<p>Exploration done by other parties</p> <p><i>Acknowledgment and appraisal of exploration by other parties.</i></p>		<p>Significant previous exploration has been carried out throughout the project by various companies, including AC/RAB, RC drilling and diamond drilling</p> <p>1971-1973 WMC: RAB, RC and surface diamond drilling</p> <p>1976 Newmont: 10 surface diamond drillholes (predominantly targeting base metals).</p> <p>1980-1986 BHP: RAB, RC and surface diamond drilling (predominantly targeting base metals).</p> <p>1986-1993 Eastmet: RAB, RC and surface diamond drilling.</p> <p>1993-1997 Goldmines of Australia: RAB, RC and surface diamond drilling. Underground mining and associated underground diamond drilling.</p> <p>2000-2003 Aquila Resources Ltd: Shallow RAB and RC drilling</p> <p>2004-2005 Goldcrest Resources Ltd: Shallow RAB and RC drilling; data validation.</p> <p>2007- 2013 Apex Minerals NL: 9 diamond holes targeting extensions to the Youanmi deeps resource.</p>

Criteria	JORC Code explanation	Commentary
Drill hole Information	<p>A summary of all information material to the understanding of the exploration results including a tabulation of the following information for all Material drill holes:</p> <ul style="list-style-type: none"> • easting and northing of the drill hole collar • elevation or RL (Reduced Level – elevation above sea level in metres) of the drill hole collar • dip and azimuth of the hole • down hole length and interception depth • hole length. 	Refer to drill results Table/s and the Notes attached thereto.
Data aggregation methods	<p>In reporting Exploration Results, weighting averaging techniques, maximum and/or minimum grade truncations (e.g. cutting of high grades) and cut-off grades are usually Material and should be stated.</p>	All reported assay intervals have been length weighted. No top cuts have been applied. A lower cut-off of 0.5g/t Au was applied for RC and diamond core.
	<p>Where aggregate intercepts incorporate short lengths of high-grade results and longer lengths of low-grade results, the procedure used for such aggregation should be stated and some typical examples of such aggregations should be shown in detail.</p>	Mineralisation over 0.5g/t Au has been included in aggregation of intervals for RC and diamond core.
	<p>The assumptions used for any reporting of metal equivalent values should be clearly stated.</p>	No metal equivalent values have been used or reported.
Relationship between mineralisation widths and intercept lengths	<p>These relationships are particularly important in the reporting of Exploration Results.</p>	The mineralisation strikes generally WNW and dips to the west at approximately -60 degrees. Drill orientations are usually 060 degrees and -60 dip. Drilling is believed to be generally perpendicular to strike. Given the angle of the drill holes and the interpreted dip of the host rocks and mineralisation (see Figures in the text), reported intercepts approximate true width.
	<p>If the geometry of the mineralisation with respect to the drill hole angle is known, its nature should be reported.</p>	
	<p>If it is not known and only the down hole lengths are reported, there should be a clear statement to this effect (e.g. 'down hole length, true width not known').</p>	
Diagrams	<p>Appropriate maps and sections (with scales) and tabulations of intercepts should be included for any significant discovery being reported These should include, but not be limited to a plan view of drill hole collar locations and appropriate sectional views.</p>	Refer to Figures and Table in the text.
Balanced reporting	<p>Where comprehensive reporting of all Exploration Results is not practicable, representative reporting of both low and high grades and/or widths should be practiced to avoid misleading reporting of Exploration Results.</p>	Representative reporting of both low and high grades and widths is practiced.
Other substantive exploration data	<p>Other exploration data, if meaningful and material, should be reported including (but not limited to): geological observations; geophysical survey results; geochemical survey results; bulk samples – size and method of treatment; metallurgical test results; bulk density, groundwater, geotechnical and rock characteristics; potential deleterious or contaminating substances.</p>	All meaningful and material information has been included in the body of the announcement.

Criteria	JORC Code explanation	Commentary
Further work	<p><i>The nature and scale of planned further work (e.g. tests for lateral extensions or depth extensions or large-scale step-out drilling).</i></p> <p><i>Diagrams clearly highlighting the areas of possible extensions, including the main geological interpretations and future drilling areas, provided this information is not commercially sensitive</i></p>	<p>Further work (RC and diamond drilling) is justified to locate extensions to mineralisation both at depth and along strike.</p>