

## AIRBORNE MAGNETIC SURVEY AT BOLT CUTTER PROJECT – PILBARA WA

### Highlights

- Exploration initiated at the “Bolt Cutter Project” located along strike from the Hemi Discovery on the Berghaus Shear – Mallina Province
- High resolution magnetics has been flown and will be modelled covering application E45/5613
- Historical high-resolution magnetics have also been sourced for application E45/5623 and are currently being modelled

Wildcat Resources Limited (ASX: WC8) (“Wildcat” or “the Company”) (formerly **Fraser Range Metals Group Limited**) is pleased to announce that it has kicked off exploration activities at the **Bolt Cutter Project** in the Mallina Province – Pilbara Western Australia. Wildcat Resources has a dominant land position with three applications (E45/5613, E45/5623, E45/5612) in the under-explored Mallina Province - WA.

The Company has reviewed the historical data on the project and has identified that better magnetic resolution will allow for more efficient planning of the upcoming exploration campaigns.

The Mallina Basin is a large and highly prospective gold province and yet is grossly under explored. The exploration maturity of the Mallina Basin is lower than many other gold regions in WA, and recent exploration successes there may indicate that there is significant untested potential of the region.

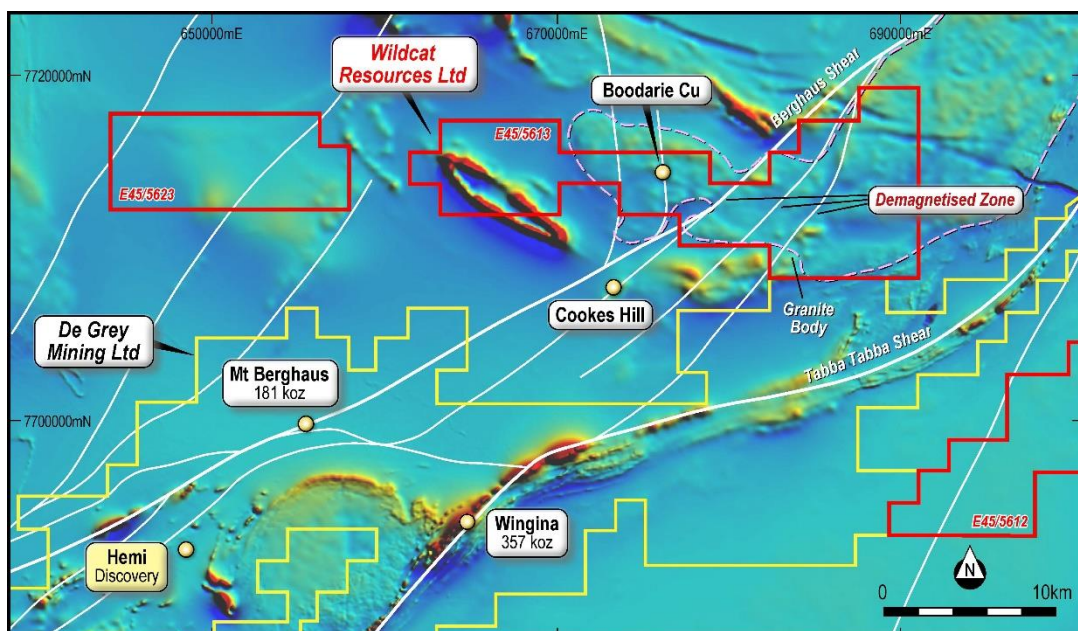


Figure 1 – Bolt Cutter Project in the Mallina Province – Pilbara WA



**WILDCAT**  
RESOURCES

ASX Code: WC8

Director: Matthew Banks

Director: Alex Hewlett

Director: Aidan Platel

Director: Tom Bahen

Secretary: Zane Lewis

Secretary: James Bahen

#### REGISTERED OFFICE

Suite 6, 295 Rokeby Rd,  
Subiaco, WA, 6008

#### Postal Address

Suite 6, 295 Rokeby Rd,  
Subiaco, WA, 6008

#### WEBSITE

[www.wildcatresources.com.au](http://www.wildcatresources.com.au)

T: +61 (8) 6555 2950

F: +61 (8) 6166 0261

ACN: 098 236 938

#### Wildcat Resources Ltd

Wildcat Resources is a company focused on discovery with strategic land holdings in three world class provinces. The Mt Adrah gold project in the Lachlan Fold (NSW), the Pilbara Gold project and the Fraser Range project both in WA.

The company has secured a Tier One technical team to help advance these projects.

#### FOR ENQUIRIES

PLEASE CONTACT:

[info@wildcatresources.com.au](mailto:info@wildcatresources.com.au)

T: +61 (8) 6555 2950

The recent discovery of the Hemi gold deposit by De Grey Mining Ltd (ASX:DEG) has uncovered a major new gold system in the Mallina Gold Province. Previous exploration primarily focused on targeting structurally controlled gold mineralisation, though Hemi demonstrates that the Towerana gold deposit is not the only intrusion-hosted system in the belt. Gold occurrences in the region are commonly sediment- or intrusion- hosted and associated with anticlinal axes, particularly where they intersect major fault or shear structures. The highly prospective Berghaus Shear trends in a north-easterly direction and looks to have provided fluids for the formation of the Hemi Deposit. In addition to the Berghaus Shear, anticlinal axis trends in a parallel orientation with multiple splays off the Berghaus Shear intersecting the anticlinal axis provide areas of interest. Similar settings may be replicated in the Wildcat tenement package. Given the recent significant exploration success by De Grey, the region could be viewed as having the potential to become a World Class Province.

Potential for other types of mineralisation in the region will also be investigated by Wildcat.

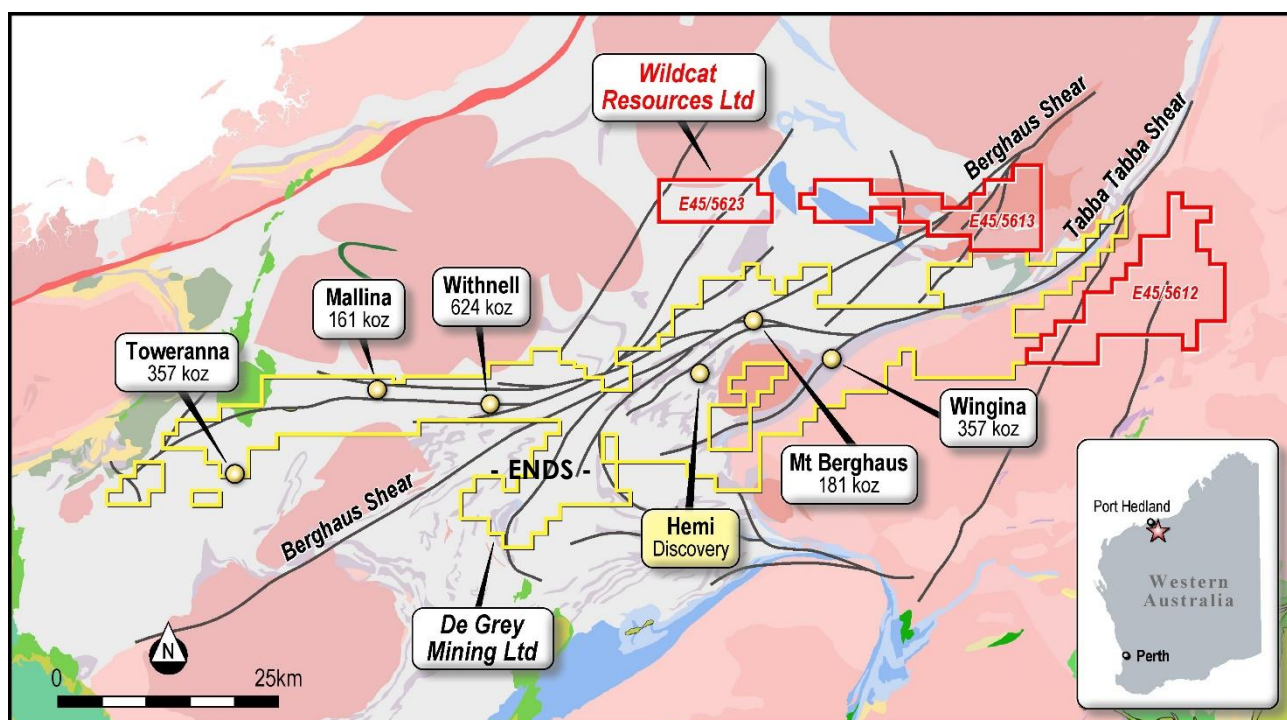
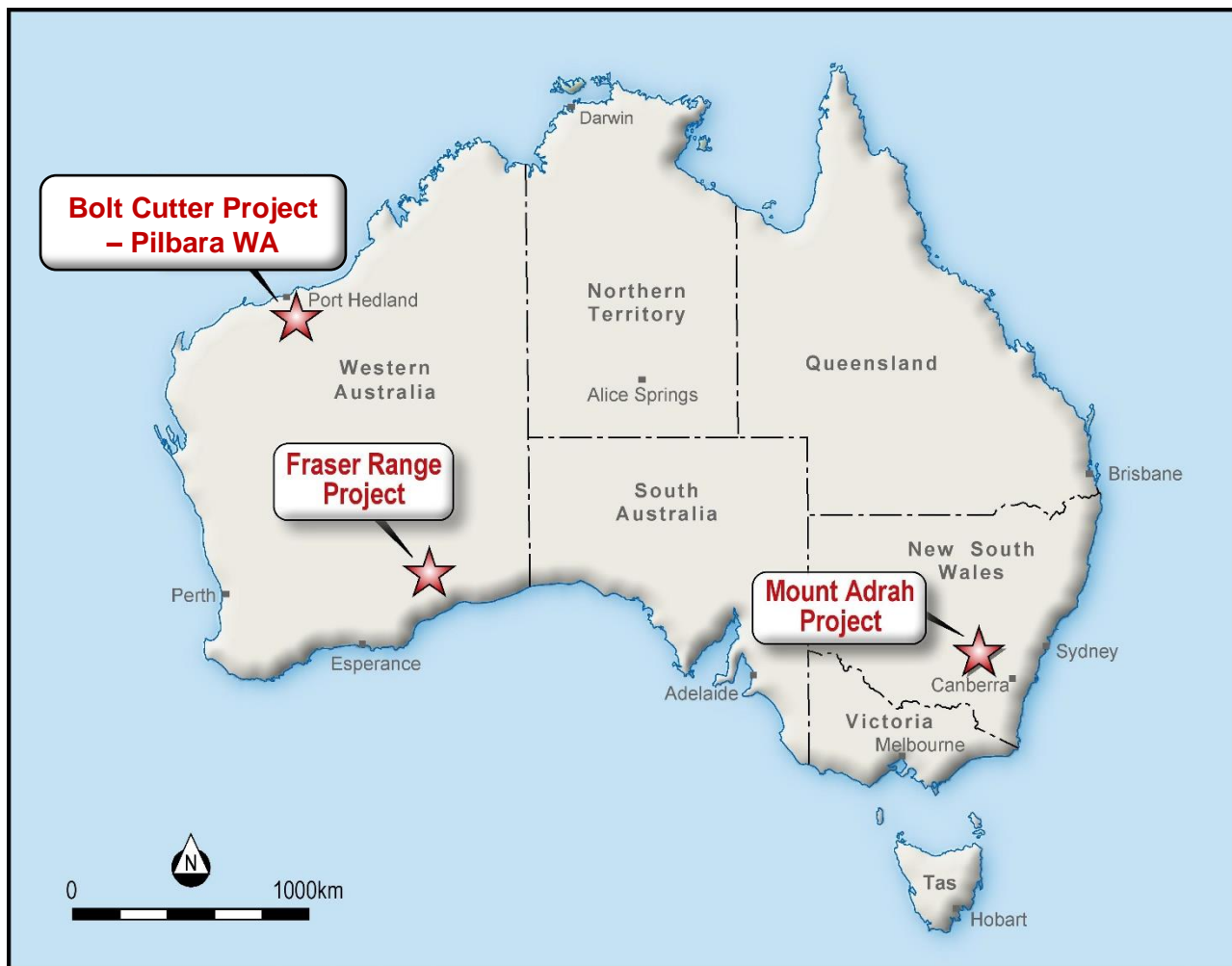


Figure 2 – Mallina Province in the Pilbara Western Australia



**Figure 3 – Three projects in Australia**

This announcement has been authorised by the Board of Directors of the Company.

**FOR FURTHER INFORMATION, PLEASE CONTACT:**

Mr. Matthew Banks

**Executive Director**

Tel: +61 (8) 6555 2950

[info@wildcatresources.com.au](mailto:info@wildcatresources.com.au)

## **ABOUT WILDCAT RESOURCES LIMITED**

### **MOUNT MT ADRAH**

Wildcat Resources Limited holds the Mount Adrah Gold Project ("**Mount Adrah**"), a highly prospective 200km<sup>2</sup> tenement package located within the well-endowed Lachlan Orogen region in NSW. The project includes the Hobbs Pipe gold deposit which has an existing JORC 2012 -compliant Mineral Resource estimate of 20.5Mt @ 1.1g/t Au for 770,000 oz of contained gold.

In addition to Hobbs Pipe, a number of high-grade gold reef systems have been identified by historic artisanal workings and limited exploration drilling, including down-hole intercepts such as **10m @ 17.7 g/t Au from 506m** (GHD009) at the Castor Reef Prospect, about 200m north-east of Hobbs Pipe, and **1.2m @ 58.6 g/t Au from 624m** (GHD011) at the White Deer Reef Prospect, a further 150m to the north-east of the GHD009 intercept. The drill-hole intervals are interpreted to align with the artisanal workings. However, surface geochemistry and drilling have not yet tested the near-surface potential of these targets.

A number of quartz vein reef-style targets were identified as targets of interest in a study by prior owners in 2016. Results on the follow-up work done on some of these targets have been promising to date. Outside of the immediate Hobbs Pipe area, the project has had little exploration activity since the 1990's, with several areas of surface gold anomalies yet to be followed up with drilling.

### **BOLT CUTTER PROJECT**

Wildcat Resources Limited has strategically applied for tenements within the Mallina Gold Province in the Pilbara, on the Berghaus Shear and up-strike from the new discovery of "Hemi" by De Grey Mining (ASX: DEG) in February 2020.

### **Forward-Looking Statements**

*This document may include forward-looking statements. Forward-looking statements include, but are not limited to, statements concerning Wildcat Resources Limited's planned exploration program and other statements that are not historical facts. When used in this document, the words such as "could," "plan," "estimate," "expect," "intend," "may", "potential," "should," and similar expressions are forward-looking statements. Although Wildcat Resources Limited believes that its expectations reflected in these forward-looking statements are reasonable, such statements involve risks and uncertainties and no assurance can be given that actual results will be consistent with these forward-looking statements.*

### **Competent Person's Statement**

*The information in this report that relates to Exploration Results and Mineral Resources for the Mount Adrah Project is based on, and fairly represents, information compiled by Mr Damien Keys, a Competent Person who is a Member of the Australian Institute of Geoscientists (AIG). Mr Keys is currently a consultant to Wildcat Resources Limited, the vendor of the Mount Adrah Project. Mr Keys has sufficient experience that is relevant to the style of mineralisation and type of deposit under consideration, and to the activity being undertaken to qualify as a Competent Person as defined in the 2012 Edition of the JORC Code. Mr Keys consents to the inclusion in the report of the matters based on his information in the form and context in which it appears.*



## ASX Listing Rule Information

Table 1 – JORC (2012) Mineral Resources Estimate for the Hobbs Pipe Gold Deposit

Resource Classification	Depth Below Surface	Oxidation Zone	COG Au (g/t)	Tonnes (Mt)	Grade (g/t Au)	Contained Gold (oz)
Indicated	0 – 150m	Oxides	0.4	0.6	0.9	18,000
		Fresh	0.9	3.0	1.0	96,000
	150 – 700m	Fresh	0.9	8.5	1.2	320,000
<b>TOTAL INDICATED RESOURCES</b>				<b>12.1</b>	<b>1.1</b>	<b>440,000</b>
Inferred	0 – 150m	Fresh	0.5	0.2	0.6	39,000
	150 – 700m	Fresh	0.9	8.2	1.1	290,000
<b>TOTAL INDICATED RESOURCES</b>				<b>8.4</b>	<b>1.1</b>	<b>330,000</b>
<b>TOTAL RESOURCES</b>				<b>20.5</b>	<b>1.1</b>	<b>770,000</b>

The Mineral Resource was first reported in an announcement by former Mount Adrah owners Sovereign Gold Company Ltd (ASX Announcement 27 December 2013). The company confirms that it is not aware of any new information or data that materially affects the information included in the original market announcements and, in the case of estimates of Mineral Resources, that all material assumptions and technical parameters underpinning the estimates in the original market announcements continue to apply and have not materially changed. The company confirms that the form and context in which the competent persons findings have not been materially modified from the original announcement.